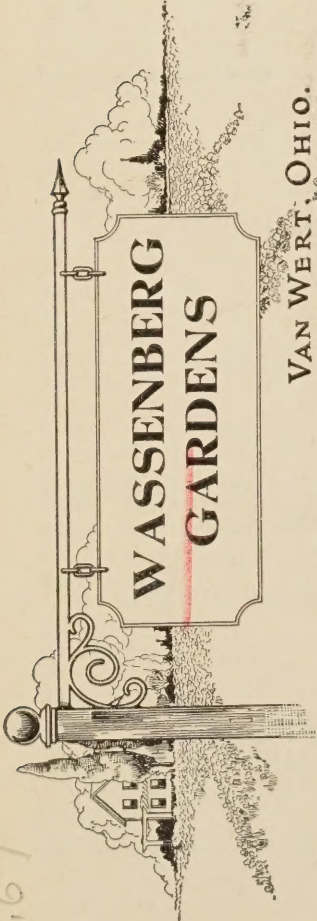


## **Historic, Archive Document**

Do not assume content reflects current scientific knowledge, policies, or practices.



62.67



**WASSENBERG  
GARDENS**

VAN WERT, OHIO.

"The Peony City"

4 1/2 Miles East on U. S. 30

*LIBRARY*

LIBRARY  
RECEIVED  
★ JUN 11 1953 ★  
U. S. Department of Agriculture

Sec. 34.66 P. L. & R.  
U. S. POSTAGE  
**PAID**  
VAN WERT, O.  
Permit No. 8

*Mrs. Smallwood  
Bibliography*

U. S. Department of  
Agriculture,  
~~WASHINGTON, D. C.~~

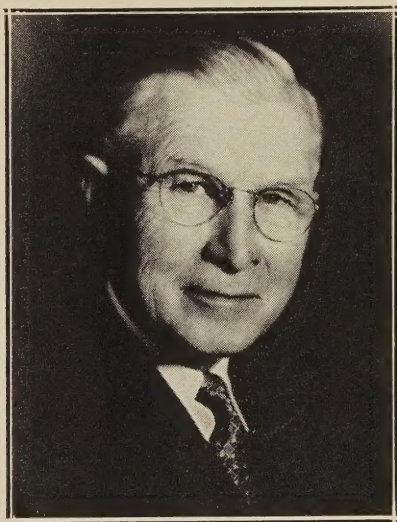
*Return Postage Guaranteed*

DEALERS' & GROWERS' WHOLESALE PRICES

FALL 1953

SPRING 1954

U.S. GOVERNMENT PRINTING OFFICE



---

WHOLESALE

STRONG STOCK SUITABLE FOR RESALE

PRICES NET CASH

Varieties Guaranteed True to Name

No Charge for Packing

Iris shipped after July 1. Peonies shipped after September 1

Poppies shipped after August 1

Hemerocallis shipped at once if desired

Early orders advised as some stocks are limited

All Prices F.O.B. Van Wert, Ohio

If shipment by parcel post is desired, send enough to cover postal charges. Balance not used will be returned promptly.

Shipments by railway express are sent collect.

---

## IRISES

## All One Year Stock

Varieties where no single price is listed are obtainable only in minimum quantity of three of a variety.

	Wholesale Prices				
	Price of each in lots of	1	3	5-10	25 or More
Abelard (H. Sass) S. livid brown, F. purple			.15	.12	.08
Ace High (Lyle) Fine large yellow	.40			.35	
Airy Dream (Sturt) Clr. soft pink; self; 33"			.15	.12	.08
Aladdin's Wish—Blue brushed cream, large	.60		.50	.40	.30
Alan Hoyt—Brown and buff bi-color			.15	.12	.08
Alastor—Cyclamen pink; A.M.	.35			.25	
Alba Superba—Very large pure white	.60				
Alice Harding (Cay) Soft satin yellow			.15	.12	.10
Aline (Ste) Fine deep blue			.15	.15	.12
Allure—S. pink, F. rose pink, rich, 40"			.15	.12	.08
Al-Lu-We—Tall, large variegata, 40"			.15	.12	.08
Alta California—Yellow branched low, 48"			.15	.12	.10
Amandine—New cream self	2.00				
Ambassador (Vil) S. bronze; F. maroon			.15	.12	.08
Amentil (H. Sass) Soft tan and lilac blend			.15	.12	.08
Amethyst Dome. 36" S. Pure amethyst; F.					
Dahlia carmine			.20	.15	
Amigo—Lavender and deep violet, white	.35		.30	.25	
Andromede (Vil) New and rare			.15	.12	.08
Angelus (Egelberg) Lilac pink blend			.25	.20	.15
Anna Gage (Gage) S. Olive; F. Brown			.20	.15	.10
Apaches—S. Coppery Red; F. Brown			.15	.12	.08
Apricot Glow (Weis-Schr) Rosy apricot, 36"			.25	.20	.15
Arab Chief—Burnt orange, large	.50			.40	
Arctic—Creamy white and gold			.25	.20	.15
Arethusa—Large rose fuchsia	.40			.35	
At Dawning (Kirk) Pink white & rose blend			.15	.12	.10
Aubanel (Cay) Shrimp-pink			.20	.15	.10
Auburn—Coppery henna-brown	1.50				
Autumn Dawn—Soft pink. Fall bloomer	.35			.30	
Autumn Elf (Brown) Fall bloomer			.18	.15	.12
Autumn Frost (Schr.) Frosty white	.30			.25	
Autumn Haze (Sass) S. wine; F. velvet-violet			.25	.20	.15
Autumn King (Sass) Blooms spring & fall.			.18	.15	.12
Autumn King Junior—Blue, lav. bicolor			.18	.15	.12
Autumn Sunset—Blend of gold, rose and lilac	.40			.30	.25
Autumn Surprise—S. & F. bl. vio., fall bloom.			.18	.15	.10
Azure Skies—Ruffled lavender-blue			.25	.25	.20
Baghdad—Deep strong yellow self	1.00			.85	
Baldwin (H. Sass) Violet self; fine large, 40"			.15	.12	.08
Ballet Girl (Sass) Pure blush pink	.35			.30	
Balmung—Yellow, plicata, H. M. 1940	.35			.30	.25
Bayside—44". E. rich velvety bicolor			.15	.12	.08
Bandmaster (Hall) Very large, medium blue.					
36" to 40". H.M., A.I.S., '44	.40			.30	
Belmont (Wil) 36 in. Very early blue-self	.30			.25	
Beotie (Cay) Metallic blueish lavender, 48"			.15	.12	.10
Beowulf (Schr) True maroon red			.20	.15	.10
Berkeley Fire (Salb.) 36". A fine red bicolor	.30			.25	
Berkley Gold—Clear yellow, late, 32"	.30			.25	
Bertha Gersdorf (J. Sass) Oddly feathered					
flower of pale yellow, marked rosy purple.					
Large, 36"	.40			.35	
Black Banner (Nich.) Velvety black, 3 ft.	.60			.50	
Black Forest—"Black as pitch"; H.M.; A.I.S.	.75			.65	
Black Magic—Blackish purple			.25	.20	
Black Wings—Deep blue black, fine			.20	.18	.12
Blazing Star (Nich) Yellow			.15	.12	.08

	Price of each in lots of	1	3	5-10	25 or More
<b>Blended Beauty</b> (Weed) Golden Bronze.....			.20	.15	.12
<b>Blenheim</b> (Stern) Rich bronze & violet .....			.20	.15	.12
<b>Blue Frills</b> —Pure azure blue .....	.75			.60	
<b>Blue Heaven</b> —Very dark blue .....			.25	.20	.18
<b>Blue June</b> (Don) Pale blue lavender .....			.15	.12	.10
<b>Blue Melody</b> —Light blue self .....	.35			.30	
<b>Blue Monarch</b> —Soft blue; taffeta sheen .....			.20	.15	.12
<b>Blue Rhythm</b> —Large cornflower blue .....	.50			.40	.35
<b>Blue Shimmer</b> —Plicata. Dappled with blue..	.50		.40	.35	.30
<b>Blue Triumph</b> (Grin) 42" fine pale blue.....			.15	.12	.10
<b>Blue Velvet</b> —Velvety, best dark blue, 40" ...			.20	.20	
<b>Blue Zenith</b> —Ruffled light campanula blue	.30			.30	
<b>Boadicea</b> —Soft apricot, blend, vigorous .....			.15	.12	.08
<b>Bombay</b> —Variegata .....	.40			.35	
<b>Bonsor</b> —Deep velvety blue .....	.30		.25	.20	
<b>Bountiful Blue</b> —Fall blooming, blue .....			.18	.15	.12
<b>Bright Lights</b> —A bright waxy yellow .....	.60			.50	
<b>Bronzino</b> (Salb) Frosty golden bronze, 40"....			.15	.12	.08
<b>Brown Thrasher</b> —Newest and best brown ...	.50			.45	
<b>Bryce Canyon</b> —Red-brown with henna .....	.75			.50	
<b>Buckskin</b> —Buckskin tan, large flowers .....			.20	.15	.12
<b>Buechley Giant</b> —Med. bl.; bi-color, ex. lg.			.20	.20	.15
<b>Buffawn</b> —S. light fawn; F. light pinkish buff overlaid smoky lavender, veined old gold	.30		.25	.20	.18
<b>Burgundy Rose</b> —Dark rosy amethyst .....	1.00			.85	
<b>Buttercup Lane</b> —Rich buttercup yellow .....			.25	.20	.15
<b>Buto</b> (Sass) Deep blue purple .....			.15	.12	.10
<b>Cadetou</b> —S. yellow; F. garnet .....			.20	.15	.12
<b>Cafe Au Lait</b> (Graham) Soft creamy tan, self			.15	.12	.10
<b>Calcutta</b> (Klein) cocoa brown, flecked, 42"....			.25	.20	
<b>California Gold</b> —Tall golden yellow .....			.25	.20	.20
<b>California Peach</b> —Delicate pink and apricot			.25	.20	.15
<b>Capt. Wells</b> —Maroon-purple .....	.35			.25	
<b>Cardinal</b> —S. lav., F. pur., fragrant .....			.15	.12	
<b>Caroline Burr</b> —Ivory white .....	.40			.35	
<b>Casa Morena</b> (DeFor.) Rich coppery brown self .....	.75			.65	
<b>Cascade Splendor</b> (Klein) Colorful crimped flower of pink, apricot and tan. Tall .....	1.00			.75	
<b>Castalia</b> (Will) Large blue self., frag. 36"....			.15	.12	.10
<b>Champaign Glow</b> —Large yellow flowers .....	.30			.20	.12
<b>Chantilly</b> —Crinkled and ruffled .....	.75			.60	
<b>Charm</b> (Mit.) 30". Glowing strawberry red ...	.40			.35	
<b>Cheerio</b> (Ayr) S. tan, F. vel. red, fine.....			.15	.15	.12
<b>Chief Sidar</b> (Gage) Rose red, 46" .....			.15	.12	.10
<b>Chestnut Hill</b> (Gage) Deep yel. self, frag. 45"	.50			.40	
<b>China Maid</b> (Mill) Blend of pink, bronze, lilac	.40		.35	.30	.25
<b>China Rose</b> (Sal) Decided orchid coloring....			.15	.12	
<b>Chivalry</b> (Wills.) Dykes Medal 1947, and one of the most outstanding Iris in medium blue range .....	1.25			1.00	
<b>Chloris</b> (Knorr) Light pink self .....			.15	.12	.10
<b>Christobel</b> —Brilliant red .....	.35		.30	.25	
<b>City of Lincoln</b> (H. P. Sass) Variegata, best to date .....	.30			.25	.20
<b>Clara Noyes</b> —Rich blend .....			.15	.12	
<b>Claribel</b> (J. Sass) S. white frilled blue, F. wh.			.18	.15	.12
<b>Cloth of Gold</b> —Deep golden yellow .....	.40			.35	
<b>Cloud Castle</b> —Pale wistaria blue self .....	.85			.75	
<b>Concerto</b> (Tompkins) Rich velvety pansy purple .....	.40			.35	
<b>Copper Lustre</b> —(Kirk) copper & gold blend			.25	.20	.18
<b>Copper Piece</b> (Kell) Coppery etruscan red, 34"			.25	.20	.15
<b>Copper Pink</b> —Large, soft pink, copper .....			.25	.20	.15
<b>Copper River</b> —Glistening tan, new .....	.85			.65	
<b>Copper Rose</b> —Blend old rose, tan, copper ...	.35			.30	
<b>Coppersmith</b> —Copper color sheen .....			.15	.12	.10
<b>Coral Mist</b> —Pink and deeper coral .....	.60			.50	

	Price of each in lots of	1	3	5-10	25 or More
Cordovan—Rich brown-red .....		1.00			
Coritica—Rich brown tone .....		.40			
Coronation—Yellow, one of best .....			.15	.12	.10
Coronet (D. Hall) Blended self of golden tan H. M. 1939 .....			.15	.12	.08
Crimson Tide (Nic) Very large brilliant red .....	.50			.35	
Crown Hill—Blue bi-color, ruffled .....			.20	.15	.12
Crown Jewel—Burnt orange effect, fine .....			.15	.12	.10
Crown of Gold—36 in. Good new yellow .....	.50				
Crysozo—Rich yellow, very early, 26" .....			.15	.12	.08
Crystal Beauty—(Sass) large white, branch. ....			.15	.12	.10
Cyrus the Great—Large deep violet .....			.15	.12	.10
Dalila (Den) S. White; F. red .....			.15	.12	.10
Damozel (Mor) Ruffled white .....			.15	.12	.10
Danube—Dark blue self .....			.15	.10	.08
Dauntless—Red pur., tall and large, 40" .....			.15	.12	.08
Dawning Day—Large golden yellow .....			.25	.20	
Daybreak (Klein) Huge golden pink .....	.40			.30	
Day Dream—Tall pink blend, 42" .....			.15	.12	.08
Dazzler—Red .....			.15	.12	.08
Decennial—S. yel., F. dahlia car., fragrant ....			.15	.12	.08
Deep Velvet—Blackish red-purple .....	.30				
Depute Nomblot—Dyke's medal, bronze, tall, ....			.15	.12	.08
Derek Meyer—E. rich velvety violet .....			.25	.20	.12
Derrill Hart—S. rose. F. wine .....			.15	.12	
Deseret (Thor) Variegata 40" .....			.20	.15	.12
Desert Gold—Yellow, early, large .....			.15	.12	.10
Desert Song—Ruffled new cream self, large .....	1.25				
Destiny (Bugg) Faint blue purple, fine .....			.20	.15	.10
Dinah Shore—Honey orange. Pure self .....	.35			.25	
Directeur Pinelle (Cay) Dk. bronze red.....			.20	.15	.10
Display (Grant) Dark red mahogany large, 3 ft., H.M., A.I.S. ....	.50			.30	
Distinction (Cay) Soft rose .....			.15	.10	.08
Dog Rose—Delicate soft pink, superb, 50" ....			.15	.12	.10
Don Juan—Light rosy lilac .....			.15	.12	.10
Dorcas Hutcheson—Bicolor fall bloomer ....			.25	.20	.18
Dor. K. Williamson—Rich purple .....			.20	.15	
Doxa (H. P. Sass) Olive tints, unus., early, 24" ..			.15	.12	.10
Dreamcastle—Pure orchid-pink, new .....	1.50				
Dreamland—Deep hollyhock red .....	.75			.60	
Drum Major—New oxblood red .....	2.50				
Dubrovnik (Wmsn) Blend of deep rose and gold, 38" .....			.20	.15	.10
Duke of York (Perry) Mauve .....			.15	.10	
Dymia (Shub) Deep purple self, 38" .....			.15	.12	.08
Ebony Queen (Sass) Dark, blackish purple ..	1.25				
Easter Morn—Pure white, tall, heavy texture ..			.25	.25	.25
Eclador—Large yellow; frilled .....			.25	.20	.15
E. B. Williamson—Coppery red .....			.20	.15	.10
Eclat (Gage) Blend of pink and copper .....			.15	.12	.08
El Capitan—Violet lav., large, 40" .....			.15	.12	
Eleanor Roosevelt—Pur. self, fall bloomer ....			.18	.15	.12
Electra (J. Sass.) White and purple .....			.15	.12	.10
Elkhart (Laph) Deep chestnut red, large ....			.15	.12	.10
Ella Winchester (Grin) Intense red .....			.20	.15	.12
Elmohr—Tall Wm. Mohr, fine .....	.40			.30	.25
El Morocco—Beautiful opal pink .....	.35			.25	.20
Elsa Sass—Sulphur yellow .....			.20	.15	.12
Eros (Mead) Pale coral pink, tall, fine ....			.15	.12	.10
Ethelwynn Dubuar—Deep pink self, 40" .....			.15	.12	.10
Evolution—Copper bronze, exquisite .....			.15	.12	
Evolved—48". Bronze-violet blend .....			.15	.12	.08
Exclusive—Clear light blue .....			.20	.18	.15
Extravaganza (Doug.) New amoena. S. cream white, F. rich velvety prune plum. Late ....	1.50			1.25	
Fair Elaine (Mit.) Cream white and gold ....			.25	.20	

	Price of each in lots of	1	3	5-10	25 or More
Fairylea (Hall) All white plicata, yel. beard..			.15	.12	.10
Falklands—36". Hardy new snow white .....			.15	.12	.10
Ferric—Light and red purple .....			.15	.12	
Firebrand—Gold-red bicolor, late .....			.15	.12	
Firecracker (Hall) Dark burgundy red plicata with yellow trim .....	1.25				
Firegod—Rich reddish brown .....			.15	.12	.10
Flamingo—Rose red, unusual .....			.15	.12	.10
Flaming Torch—32 in. S. hellebore; F. neu- tral red .....			.15	.12	.10
Flora Campbell—Rich russet-red self .....			.15	.12	.08
Flora Zenor—Melting cameo-pink .....	.25			.20	.18
Fortune (Klein) Coppery, brown-gold self ..			.25	.20	
Francesca—40". New deep pink self .....			.20	.15	.12
Frank Adams (Laph) S. yel. F. crushed strawberry .....			.20	.18	.15
French Maid—Pink blend .....			.15	.12	.08
Frieda Mohr—Pink bi-color, large and tall..			.18	.15	.15
Frost Queen—Frosty white. Fall bloomer ...	.30			.25	
Garden Flame (H. Sass) Garnet-red self with golden beard .....	.50			.40	
Gallant Leader (Weis) S. rose-red .....	.35			.30	
Garden Glory (Whit.) Pure self of rich Bor- deaux red .....	.85			.75	
Garden Magic (Grint) Velvety red, late, tall	.30		.25	.20	.18
Geo. Yeld (Per) S. apricot; F. rose crim....			.15	.12	.08
Germanica—Old Grandmothers Early Blue..			.15	.12	.08
Giant Baldwin—Med. blue, gigantic, 42" .....			.15	.12	.10
Glen Ellen (Con) Luminous golden tan .....			.15	.12	.10
Gloriole—Violet, greenish center, very large	.30			.25	
Goldbeater (Klein) Large chrome yellow .....	.50			.40	
Gold Coast (Pilk) New English yellow .....	.35			.25	
Gold Queen—Interesting new yellow .....			.15	.12	.08
Golden Age—A large yellow self .....			.25	.20	
Golden Arrow—42". Large pure lemon yel.; F. flaring .....			.15	.12	.08
Golden Bear (Mitc.) Rich golden yellow. 36"			.25	.20	
Golden Bow (H. P. Sass) Large flowers of chrome yellow .....			.15	.12	.10
Golden Cataract (Dysart) Fine yel., fl. bloom			.25	.20	
Golden Fleece Lemon standards, gold edge ..	.35			.25	
Golden Hind (Chad) Yel. tint. with orange			.20	.18	.15
Golden Image—36", Clear deep pure yellow			.20	.15	.12
Golden Majesty—H.M.A.I.S. 1939 .....	.30			.25	
Golden Russet (Hall) Golden russet self, huge .....	1.25			1.00	
Golden Slippers (Deforest) Daffodil yel., 36"			.20	.15	.12
Golden Spike—Deep golden yellow, large ...	.30			.25	.20
Golden Star—Pure deep gold .....	.50			.35	
Golden Treasure (Shr) Like cream col. silk..			.25	.20	.15
Good Cheer (Stur.) S. clear yel.; F. bright yel.			.20	.15	.12
Grace Lapham (Laph) Pink, slightly flushed lavender .....			.15	.12	.08
Grace Mohr (Jory) Lt. lav. veined manganese			.25	.20	.18
Grand Canyon—Odd blend of plum, copper and gold .....	.35			.30	.25
Grand Monarch—Vel. bronze red .....			.15	.12	.08
Great Lakes—Fine new blue .....	.35			.30	.25
Gudrun—Very large, pure white .....			.15	.12	.10
Gulf Stream—Rich dark blue .....	1.00				
Gypsy (Klein) Orangy cast variegata .....	.50			.40	
Gypsy Rose—Rich tapestry rose .....	1.25				
Halloween Night—Bright lemon yellow .....	.50			.40	
Happy Days—(Miz) Large fine yellow .....			.20	.20	
Harriet Thoreau (Cook) New orchid-pink self. Tall. H.M., A.I.S. 1945 .....	.35			.25	
Helaine (Mil.) White petals bordered with deep blue-violet lines .....			.20	.15	.12



	Price of each in lots of			
	1	3	5-10	25 or More
Helen M. Riedel (Riedel) 38" Fine orange bld.		.15	.12	.08
Helen McGregor (Graves) Clear pale blue.				
H.M., A.I.S. 1946 .....	1.50		1.25	
Homerun—36" S. bronze; F. Alizerine, Ex. fine		.15	.12	.08
Hoosier Sunrise—Mauve pink and yellow ....	.35		.25	
Icy Blue—Lightest of blue, beautiful .....	.30		.20	
Imperial Blush—Large soft pink .....		.25	.20	.18
Indian Chief—Red pur., popular .....		.15	.12	.08
Indian Hills—(Gra & Schr) Rich true purple		.20	.15	.12
Indiana Night (Cook) Rich velvety purple, 38" .....	.75		.65	
Inspiration—Cerise-rose. Huge and different	.65			
Itaska (Klein) Rich amethyst-purple .....		.25	.20	.15
Jake (Sass) Very fine new white .....	.30		.25	.20
Jasmania (Ayres) Tall deep yellow, 42" ....		.15	.12	
Jasper Agate—Copper-gold-red .....	.50		.40	
Jean Cayeux—G. & br. blend; Dyke's medal		.20	.18	.15
Jean Lafitte (Wash) Coppery Rose blend 39"		.15	.12	.08
Jeb Stuart—Velvety rich red, fine .....		.20	.15	
Jerry—Very bright red, tall, large, 36".....		.15	.12	.10
Jelloway—Clean yellow .....	.35		.30	
Junaluska (Kirk) Flush copper and rose ....		.20	.18	.15
Kansas Ingleside (Hill) Brown-red self. Fall bloomer .....	.40		.35	
Kalinga (Klein) Creamy wh., excellent form		.15	.12	.10
Katherine Fay—Grand white; large .....	.50	.35	.30	
Katisha (Hall) Tourmaline pink .....		.15	.12	.10
Khiva—40" Rich red-toned self .....		.15	.12	.10
King Juba—New variegata, much admir. 36"		.15	.12	.08
King Karl .....		.15	.12	.10
Kinglet (Wmsn) Yellow "Table Iris" .....		.15	.12	.10
Klondyke Gold—Deep pure yellow .....	.30		.25	.20
Kwan Yin—Lovely apricot self, large .....		.15	.12	
Lady Boscawen (Graves) New ruffled white	1.00		.75	
Lady Mohr—Oyster white; falls chartreuse ..	.40		.30	.25
Lady Paramount—Famous yellow .....		.15	.12	.08
Lake Huron (Sass) Medium toned blue self		.20	.15	.12
Lamplight (Schr.) Fresh buff self, no veins	.75			
Lancaster (Cook) Excellent old rose .....		.25	.20	.15
Laura Hutcheson (H. Sass) Red-pink cast ....		.20	.18	.15
Lavender & Old Lace—38" Lavender-violet; slightly fragrant .....		.15	.12	.10
Lecoq—30" Blue violet .....		.15	.12	
Le Correge—Lighter Ambassadeur .....		.15	.12	.10
Legend—Crim. claret, finer than Cardinal ....		.15	.12	.10
Lighthouse—S. Strawberry F. Da. Vio .....		.20	.18	.15
Lights On—One of the reddest Irises .....	1.25		1.00	
Lilamani (J. Sass) Velvety blackish self, lrg.		.15	.12	.10
Lord Dongan—Striking; deep pansy violet ..	.40		.35	
Los Angeles—White, blue edge, fine form ....		.25	.25	.20
Lothario (Schr.) An Amigo-type amoena. Rich and velvety .....	.60		.50	
Louvois (Cay) Brown and Maroon 36" .....		.20	.15	.12
Lucrezia Bori (Sch) Soft yellow, very tall, lg.		.15	.15	.12
Lux. Strawberry .....		.15	.12	.08
Lynn Langford—Orchid pink, large .....	1.25			
Magenta—Red purple, self, good .....		.15	.12	.10
Majenica (Cook) New pinkish blend .....	.35		.30	
Majestic Rose—Brilliant rosy violet .....		.25	.20	.12
Marco Polo (Schr) Rich glowing red .....		.15	.12	.08
Marinella—S. tarnished gold; F. garnet red with gold border .....	.40		.35	
Marisha (J. Sass) S. cream, F. light pink.....		.15	.12	.10
Marquitta—Ivory yellow, large fine form ....		.25	.20	.18
Mary E. Nichols—Frosty white, well formed		.25	.20	
Mary Geddes—Pom. red blend, unique, 38"....		.15	.12	.08
Master Charles (Wmsn.) Mulberry-purple ....	.40		.30	

	Price of each in lots of	1	3	5-10	25 or More
<b>Mata Hari</b> —A deep blue-violet .....		.30		.25	
<b>Matterhorn</b> (J. Sass) Finest pure white, lrg. ....		.30		.25	
<b>Matula S.</b> —Apricot, F. Indian Lake .....			.20	.15	.12
<b>Maud Deming</b> (Laph) S. lilac, F. red purple .....			.15	.12	.08
<b>May Day</b> (Hall) Apricot-salmon self .....			.15	.12	.12
<b>Melanie</b> —Orchid-pink, tall stems .....			.15	.12	.10
<b>Melchior</b> —Purple .....			.15	.12	.08
<b>Melitza</b> —Ivory pink .....			.20	.15	.10
<b>Mellow Glow</b> (Whit.) Deep peach flushed pink. 38" .....		.75			
<b>Mexico</b> —Gay, brilliant buff and brown .....		.75		.60	
<b>Midwest Gem</b> (H. P. Sass) Light yel. blend .....			.20	.15	.12
<b>Ming Yellow</b> (Glutz) Large, smooth yellow, faultless, 37" .....		.35		.30	.25
<b>Minnie Colquitt</b> (H. Sass) White plicata. Different .....		.50		.40	.30
<b>Mlobelle</b> (McKee) A lustrous rose self. Very good substance .....		.40		.30	
<b>Miss Ann</b> —Dainty flower of pearly pink .....			.15	.12	.10
<b>Miss California</b> (Salb) Beautiful rose lilac .....			.25	.20	.15
<b>Missouri</b> (Gri) Fine blue, great iris, 44" .....			.25	.25	.25
<b>Misty Gold</b> (Schr.) Lemon colored, ruffled .....		.50		.40	
<b>Mme. Louis Aureau</b> (Cayoux) Plicata .....			.15	.12	.10
<b>Modiste</b> (D. Hall) a smooth silky lavender mauve. Large 38" .....			.15	.12	.10
<b>Mohrson</b> —Improved Wm. Mohr. Violet .....		.35			
<b>Monadnock</b> (Salb) Gigantic vivid rose red .....			.25	.20	
<b>Moonlight Madonna</b> —Lge. ruffled lemon ice .....		.40		.30	.25
<b>Moonlight</b> —Silver .....			.15	.12	.10
<b>Moonlit Sea</b> (Sass) White-flushed lavender-violet .....		.35		.25	
<b>Morocco Rose</b> (Loomis) Glow. rich pink, 32" .....		.30		.25	.20
<b>Mountain Snow</b> (Kell) A fine blue white .....			.20	.18	
<b>Mountain Sunset</b> —Fawn and old gold .....			.20	.15	.12
<b>Mount Cloud</b> —White self, fragrant .....			.15	.12	.10
<b>Mt. Washington</b> —A gigantic white, 50" .....		.30		.25	.20
<b>Mozambique</b> (M & R) Large red purple .....			.15	.12	.08
<b>Mozo</b> —New red dwarf .....		.40		.35	
<b>Mrs. Gamella</b> —Lavender-blue self .....			.15	.12	.08
<b>Mrs. J. L. Gibson</b> —Deep violet .....			.15	.12	.10
<b>Mrs. Willard Jacques</b> (J. Sass) Pink and cream blend .....			.15	.12	.08
<b>Mulberry Rose</b> —Deep mulberry-pink, tall ..		.40		.35	.25
<b>Mussolini</b> —Vivid blue pur. Eng., sil. medal .....			.15	.12	.08
<b>Narain</b> (Shub) Medium blue, self, 36" .....			.15	.12	.12
<b>Naranja</b> (Mitch) Rich yellow self. ....			.15	.12	.10
<b>Nene</b> —Largest Iris grown .....			.15	.12	.08
<b>New Horizon</b> (Fay) Rich peach pink .....	1.25				
<b>New Snow</b> (Fay) Snow white, yellow beard ..	1.50			1.25	
<b>Nightfall</b> —Dark pansy-purple .....		.35		.30	.25
<b>Nightingale</b> (Hall) Golden russet .....		.35		.30	.25
<b>Noonday Sky</b> —Lavender-blue, slightly fragr. ....			.20	.15	
<b>Nylon</b> —Coppery tan with gold beard .....			.20	.15	.12
<b>October Blaze</b> (McDade) Deep red-violet .....		.30		.25	
<b>Ojibway</b> (Kirk) Coppery Indian color .....			.15	.12	.10
<b>Ola Kala</b> —Deep yellow ruffled self, fine .....		.40		.35	.25
<b>Old Parchment</b> —Creamy tan with gold ruff .....			.20	.15	
<b>Olive White</b> —Deep cream, fall bloomer .....			.18	.15	.12
<b>Orange Flame</b> —Golden orange and copper bronze .....			.20	.15	
<b>Oregon Sunshine</b> (Weed) Light yellow, 38" .....			.15	.12	.10
<b>Orloff</b> (H. P. Sass) Yellow, red brown plicata .....			.20	.15	.12
<b>Ormaco</b> (Klein) Mystic violet with bronze and true brown .....		.40		.35	
<b>Ormohr</b> (Klein) Grayish purple, huge blooms .....			.25	.20	.18
<b>Ossar</b> (H. P. Sass) Blackish red self .....			.15	.12	.08
<b>Ozark Blue</b> (Jay) Light blue self .....			.15	.12	.08

	Price of each in lots of			25 or More
	1	3	5-10	
Ozone (J. Sass) Blue grey blend .....		.15	.12	.08
Painted Desert (Mill) Brilliant coloring of Arizona Mesa .....	.40		.35	.25
Palerme .....		.25	.20	
Paltec (Den) Lt. blue, low grow., fall bloom.		.15	.12	.08
Papio—Pansy-purple, early .....		.15	.12	.08
Patrice—Cream plicata .....	.50		.40	
Patricia (Sass) Clean sparkling white .....	.30		.25	
Paulette—Light bicolor, very large blue .....		.15	.12	.10
Peachblow (H. Sass) Pinkish plicata with yellow ground .....	.40		.30	
Peshawar (Sch.) 26" Rich brown purple .....		.15	.10	.06
Pink Cameo—New "flamingo" pink of violet influence. Tangerine beard .....	1.00		.85	
Picador—Large variegata, brilliant, 40" .....		.15	.12	.08
Pink Opal—(Sass) Large pink lilac self .....		.15	.15	.12
Pink Reflection—A fine hydrangea pink .....	.65		.60	
Pink Ruffles—Pale and deep pink ruffles .....	.40		.35	
Pink Satin—True pink, self, tall & Fine .....		.25	.20	.20
Platon—Huge deep violet .....		.15	.12	.10
Platinum Beauty—Pastel lilac-pink blend .....		.15	.12	.10
Pluie D'Or—Yellow, Dykes medal winner .....		.15	.12	.10
Prairie Flame (H. Sass) Bright velvety self red .....	.85		.75	
Prairie Sunset—Sunset effect .....	.50		.40	.30
Premier Peach (Hall) Clear pinkish peach self. Tangerine beard. 34" .....	1.25			
Pres. Pilkington—Buff, blue and lav. blend .....		.15	.12	.08
Primat (Cay) Light pink toned .....		.15	.12	.08
Princess Beatrice (Barr) Light lav.; fine .....		.15	.12	.08
Priscilla (Whit.) A white with white beard .....	.50		.40	
Purple Giant (Gage) Fine red purple, bronzy beard .....		.15	.12	.10
Purple Silk—Rich silky purple, early .....		.15	.12	.10
Radiant (Salb) Coppery orange, gigantic .....		.30	.25	
Rae Jean—Late blooming, yellow .....		.15	.12	.08
Rajah Brooke (Norton) Variegata .....	.50		.40	
Rambeau—Blue ultramarine self .....		.15	.12	
Rameses—Blend. Dykes medal win. 1932, 36" .....		.15	.12	.08
Ranger—Large blooms, crimson color .....	1.00		.75	
Rebellion (Klein) Glowing deep blood red .....		.20	.15	
Red Bonnet—Dark red flowers, fine form .....		.20	.15	.12
Red Gleam—Rich red, velvety, brilliant .....	.40		.30	
Red Glory—S. soft rose; F. coppery red .....	.35		.25	
Red Meadow—32" S. hydrangea red; F. violet carmine .....		.15	.12	.10
Red Orchid—(Sass) Intermediate red, 28" .....		.15	.12	.10
Red Radiance—Rich glowing red, 38" .....		.18	.15	.12
Red Sox .....		.15	.12	.10
Red Sunset—S. brownish rose; F. carmine .....		.20	.15	
Red Valor—Garnet-red, magnificent .....	.60		.50	
Redward (Cook) Brilliant crimson red .....	1.25		1.00	
Remembrance—Pink and light yellow, large .....	.50	.40	.35	
Rhages—Large violet plicata .....		.15	.12	.08
Rhapsody—Violet, purple and brown .....	.40		.35	
Rheintochter—White and purple bicolor .....		.15	.12	.10
Rob Roy—Maroon red .....		.15	.12	
Rocket (Whit.) An orange self, standards pure chrome .....	1.00		.80	.60
Rose Bronze Blend—Bronze-brown, flushed rose .....		.15	.12	
Rose Dominion—Amer. B. rose col., frag., 27" .....		.15	.12	.10
Rose Top—Plicata of cream yellow .....	.50		.40	
Rosy Wings—Dykes Medal '39, rose .....		.15	.12	.10
Royal Coach—Bright yellow plicata .....		.15	.12	.10
Royal Scot—Red plicata .....	.40		.35	
Rubeo (Mit & Mohr) A good red .....		.15	.12	

	Price of each in lots of	1	3	5-10	25 or More
<b>Ruby Velvet</b> —Dark red bicolor .....		.30	.20	.15	.12
<b>Russet Mantle</b> —Russet brown .....		.40		.30	.20
<b>Russet Wings</b> —Golden copper and apricot ...	1.25				
<b>Ruth Pollock</b> —Fine yellow plicata, A. M. ....			.20	.15	
<b>Sable (Cook)</b> deepest blue black violet, blue beard, large, tall .....		.35		.25	.20
<b>Salar</b> —Blended cream and salmon .....			.20	.15	.12
<b>Samovar</b> —Colorful coppery rose .....			.20	.15	.10
<b>Sandalwood (H. P. Sass)</b> Army brown, large .....			.15	.12	.10
<b>Sandia (Will)</b> Vigorous, deep pink blend 40" .....			.15	.12	.08
<b>Sand Tone</b> —New light yellow effect .....			.15	.12	.08
<b>San Francisco</b> —Wh. plicata, beautiful, 40" ....			.25	.25	
<b>Sangreal (Sass)</b> Yellow fall bloomer .....			.18	.15	.12
<b>Saracen</b> —Brownish Indian red .....			.20	.15	.10
<b>Sargon</b> —Magnificent dark purple bicolor ...			.20	.15	.10
<b>Schooner (McDade)</b> White, large .....			.15	.12	.08
<b>Sea Dawn</b> —Yellow blend .....			.15	.12	.08
<b>Sea Deep</b> —Tall medium blue bicolor .....			.15	.12	.10
<b>September Skies</b> —16", clear purple .....			.18	.15	.12
<b>Shah Jehan (Neel)</b> Rich oriental colors .....			.15	.12	.08
<b>Shannopin (Pil)</b> S. yellow; F. pink .....	.30		.25	.20	.12
<b>Sharkskin (Doug.)</b> Very fine pure white, lge. ....	.35			.25	
<b>Shawano (Wmsn)</b> Tall, brilliant yellow with Van Dyke red veins .....			.20	.15	
<b>Sheriffa</b> —Deep plum; very popular .....	.35		.25	.20	
<b>Shining Waters</b> —Sky blue .....			.25	.20	.18
<b>Siegfried (H. P. Sass)</b> New type plicata, yel. ....			.20	.15	.12
<b>Sierra Blue</b> —Clear blue Dykes medal .....			.20	.15	.15
<b>Signal Light (Kirk)</b> Large red self, 36" .....			.20	.15	.12
<b>Silvanus</b> —Rose and violet .....			.15	.12	.08
<b>Silver Glaze</b> —Sparkling silvery blue .....			.15	.12	.10
<b>Smolder (Nich)</b> Tall, large red black .....	.30			.25	
<b>Snoqualmie (Brehm)</b> Lge. rich smooth cream .....			.20	.15	.10
<b>Snow Belle (McKee)</b> 38" Pearly white, lemon venations .....			.15	.12	
<b>Snow Carnival</b> —Outstanding ruffled white ..	.60			.50	
<b>Snow Flurry (Rees)</b> Pure ice white, 48" .....	.50		.45	.40	.35
<b>Snowking (Sass)</b> Giant white .....			.15	.12	.10
<b>Snow Velvet</b> —White, gardenia-like texture ..	.40			.30	
<b>Solid Mahogany (J. Sass)</b> New dark red, fine .....	.60			.50	.40
<b>Solitude</b> —Deep mulberry self .....	.30		.25	.20	.15
<b>Sorrente</b> —Blue and yellow blend .....	.35		.30	.25	.20
<b>Sound Money</b> —Good clean yellow .....			.20	.18	
<b>Southland (Sass)</b> Dp. lem. chrome self, 24" .....			.20	.20	
<b>Souv. de L. Chavagnac</b> —Violet, fragrant .....			.25	.20	.15
<b>Spark</b> —Brick red .....			.15	.12	.08
<b>Spindrift (Loom.)</b> Delicate seashell pink with furry tangerine beard .....	.60			.50	
<b>Spokan</b> —(Sass) Bright red brown blend, 36" .....			.15	.12	.08
<b>Sporty</b> —Light tan and purple blend .....			.15	.12	.08
<b>Spring Cloud (Jory)</b> Blue and white plicata .....			.20	.15	
<b>Spring Prom (Hall)</b> 38" Lemon-yellow, H. M. ....			.15	.12	.08
<b>Spun Gold (Glutz)</b> 38" Deep golden yellow ..	.40			.30	.25
<b>SQ 72 (Loomis)</b> Coral-pink, self .....	.75			.60	
<b>Stained Glass</b> —Copper red self .....			.20	.15	.10
<b>Stardom</b> —Onionskin pink .....			.15	.12	.08
<b>Starless Night (J. Sass)</b> Deep blackish red ..	.35			.30	
<b>Stella Polaris (K. Smith)</b> Tall, white, large ..	.35			.25	
<b>Storm King</b> —Silky blackish purple .....	.50			.40	
<b>Stripe Leaves</b> —Blue, foliage striped .....			.25	.25	
<b>Summer Tan (Kirk)</b> S. tan, F. bro'sh tan, 30" .....			.15	.12	
<b>Sunburst</b> —Yellow, apricot glow .....			.15	.12	.10
<b>Sundance</b> —Blend of tan and mahogany .....	.40			.35	
<b>Sun Dust</b> —Chrome-yellow .....			.15	.12	
<b>Sun Ray (Hall)</b> Large ruffled light yellow ..	3.50				
<b>Sunset Gold</b> —32" Rich deep yellow .....			.15	.12	.08
<b>Sunset Serenade</b> —Golden tan and apricot ...	.50		.40	.35	.30

	1	3	5-10	25 or More
Price of each in lots of				
Sunny South (Wash.) Deep yellow self .....		.15	.12	.10
Surefire (Nich) Fall bloomer, light yel. ....		.18	.15	.10
Susa (H. P. Sass) S. Brill. purple, F. velvety		.15	.12	.08
Sylvia Murray—Very light blue .....	.50		.40	
Talisman—Iridescent yel. blend, frag., 32" ....		.15	.12	.08
Tan Delight—40" Buff-tan-violet blend .....		.15	.12	.08
Tapestry Rose—Soft old rose. H.M., A.I.S. '42	.45		.40	
Tea Rose (Whit.) Fresh pink, new .....	.40		.35	
Television Blue (Shub) Med. blue, hor. falls		.15	.12	.10
Tenaya—Rich deep plum purple.....		.15	.12	.10
The Admiral—Effective intense blue .....	.40		.30	
The Bishop—Purple self .....		.25	.20	.15
The Black Douglas—S. dk. vio., F. bk. vio. 36"		.15	.15	.12
The Guardsman—Dusky pink S., darker F. ..		.15	.12	
Theodolinda—Pure white plicata, 44" .....		.25	.20	.15
The Raven—Glossy black-purple .....	.75		.60	
The Red Brick (Weed) Color of red brick, 31"		.15	.12	.08
The Red Douglas (J. Sass) Fine new red, orange beard .....	.40	.35	.30	
Three Cheers (Cook) Blue bi-color, whitish beard .....	.60		.50	
Three Oaks—Old rose pink blend .....	.60		.50	
Tiffanja—Distinctive yellow plicata .....	.40		.30	
Tiffany—Unusual yel. plicata .....		.25	.20	.18
Tint O' Tan (Ayr) Bronzy tan and yellow ....		.15	.12	.08
Tip Top—Dark blue plicata .....	.65		.50	
Tishomingo (Caldwell) Clear wisteria blue self .....	.40		.30	
Tobacco Road—Golden tobacco brown blend	1.00		.85	
Tokay—Salmon pink, charming, 36" .....		.15	.12	.08
Token—Old gold S. flushed rose, F. rosy brn.		.15	.12	.10
Top Sergeant—Red-brown self, velvety falls		.15	.12	
Tower of Jewels—Fine brt. yellow & mauve		.20	.15	
Treasure Island (Klein) Olive yel., beard dp.		.25	.20	.15
Treva—Golden apricot self, large .....	1.00		.85	
True Delight—Pure pink Plicata. 36" .....		.15	.12	.08
Vagabond Prince—Fine, tall purple-violet ..	.30		.25	.20
Valor—Dp. bl. vio., b-color, outstanding, 50"		.15	.12	.10
Varese (Will) Red purple .....		.20	.15	.12
Vatican Purple (Whit.) Deep, bright blue- purple .....	.50		.40	
Velvet Knight—Dark blue self .....		.20	.15	
Venus de Milo—Fine new white, 42" .....		.15	.12	.08
Violet Crown—Very tall, pure violet, 40" ....		.20	.15	.12
Violet Symphony—Gleaming lilac-mauve self	.40		.30	.25
Vision (Cay) Variegata of clear yel. and bro.		.15	.12	.10
Wabash (Wmsn) S. white F. blue .....	.30		.20	.15
Waconda (H. Sass) Rich, fuchsia red, 38"....		.15	.12	.10
Wambliska—White, large, fine form, 36" .....		.15	.12	.08
Wantage—24" Rich purple with black sheen		.15	.12	.08
War Eagle (J. Sass) Finest red toned .....		.15	.12	.08
Waverly (Wil.) H.M., A.I.S. Large flowers of medium blue .....	.35		.30	
Wedgewood (Dyk) Blue self; well named....		.15	.12	.10
West Point (Nic) Wonderful bicolor, fine ....		.25	.20	
White Autumn King (Sass) Pure white .....		.18	.15	.12
White Goddess—Large pure white; sturdy ..		.20	.15	.12
W. Carey Jones—30" Soft clear ivory .....		.15	.12	.08
White Marble—Tall white, gold beard .....		.15	.12	.08
White Wedgewood (Grant) Porcelain-white..	.50		.40	.35
Wild Honey (Whiting) Soft golden tan self	.40		.35	
William Mohr—Lilac, veined manganese .....		.25	.20	.18
Winneshiek—Excellent dark blue iris .....		.15	.12	.10
Winter Carnival (Schr.) Fine white. New ....	.50		.40	
Wonderchild—S. vio., F. blue violet .....		.15	.12	.10
Wotan (Grin) Velvety pur. brown blend ....		.15	.12	.08

	Price of each in lots of	1	3	5-10	25 or More
<b>Yakima</b> —Brilliant variegata .....			.15	.12	.08
<b>Yellow Champion</b> .....			.15	.12	.08
<b>Zebra</b> —Leaves striped white, blossoms blue .....			.25	.25	
<b>Zua</b> —White frosted crepe, crinkles 16" .....			.18	.15	.12
<b>Zulu</b> —Fine blue purple, tall .....			.25	.20	

## FALL BLOOMERS

These will give you bloom in the spring and again in the fall.  
No garden should be without some of them.

Price of each in lots of	Wholesale Prices			25 or More
	1	3	5-10	
<b>Autumn Dawn</b> —Soft pink .....	.35		.30	
<b>Autumn Elf</b> (Brown) S. cream. F. lav., fra. ....		.18	.15	.12
<b>Autumn Frost</b> (Schr.) Frosty white .....	.30		.25	
<b>Autumn Haze</b> (H. Sass) Large violet purple .....		.25	.20	.15
<b>Autumn King</b> —36", blue purple .....		.18	.15	.12
<b>Autumn King Junior</b> —Blue, lav. bicolor ....		.18	.15	.12
<b>Autumn Sunset</b> —Blend of gold, rose and lilac .....	.40		.30	.25
<b>Autumn Surprise</b> —S and F. blue .....		.18	.15	.10
<b>Black Magic</b> —Blackish purple .....		.25	.20	
<b>Bountiful Blue</b> —Fine blue .....		.18	.15	.12
<b>Dorcas Hutcheson</b> —Blue bi-color .....		.25	.20	.18
<b>Eleanor Roosevelt</b> —Deep red violet .....		.18	.15	.12
<b>Frost Queen</b> —Frosty white .....	.30		.25	
<b>Golden Cataract</b> (Dysart) Rich golden yel.....		.25	.20	
<b>Halloween Night</b> —Bright lemon yellow .....	.50		.40	
<b>Jean Siret</b> —10", yellow flecked blue .....		.25	.20	
<b>Kansas Ingleside</b> —Brown-red self .....	.40		.35	
<b>Laura Hutcheson</b> (H. Sass) Red-pink cast ....		.20	.18	.15
<b>October Blaze</b> (McDade) Deep red-violet .....	.30		.25	
<b>Olive White</b> (Sass) Deep cream, very fine ....		.18	.15	.12
<b>Sangreal</b> (Sass) Yellow fall bloomer, 28"....		.18	.15	.12
<b>September Skies</b> —16", clear purple .....		.18	.15	.12
<b>Southland</b> (Sass) Dp. lem. chrome self, 24" .....		.20	.20	
<b>Souv. de L. Chavagnac</b> —Violet, fragrant ....		.25	.20	.15
<b>Surefire</b> (Nich) Light yellow .....		.18	.15	.10
<b>White Aut King</b> (Sass) Pure White .....		.18	.15	.12

## BEARDLESS IRISES

	Wholesale Prices				
	Price of each in lots of	1	3	5-10	25 or More
Aurea—Spuria yellow .....		.35			
Bob White—(S. B.) Waxy snow white .....		.35		.20	
Caesar (Sib) Dark red-purple, 30 in. ....		.35		.30	
Caesar's Brother (S. B.) New blue, fine .....		.35		.30	
Distinction (Sib) Speckled blue and white....		.35		.25	
Dor. K. Williamson—Dk. violet .....		.25		.15	
Emperor—(S. B.) Dk. blue .....		.35		.15	.12
Gay Heart—Nice dark blue self; late .....		.35			
Heavenly Blue (Sib) New clear blue .....		.35		.25	
Kingfisher Blue—(S. B.) Bright blue .....		.35		.25	
Mrs. Gray Hill (Sib.) Intense blue .....		.35			
Nora Distin—Blue and white .....		.35		.25	.20
Ochroleuca (Spuria) White and yellow .....		.35		.25	
Periwinkle—Deep violet purple .....		.35		.25	
Perry's Blue—(S. B.) One of the best blues .....		.35		.20	
Peggy Perry (Sib.) Blue .....		.35			
Pseudacorus—Bright yellow, tall, late .....		.35		.25	
Queen Victoria—Very tall, white .....		.35		.30	
Shelford Giant—Large and tall .....		.40		.35	
Snow Queen—(Orien) White .....		.35		.20	

## DWARF BEARDED IRISES

	Wholesale Prices				
	Price of each in lots of	1	3	5-10	25 or More
Bridesmaid—Pale blue and yellow .....			.18	.15	.12
Cyanea—Red purple; fragrant .....			.18	.15	
Fairy—Light yellow .....			.18	.15	.12
Harbor Lights—Light yellow .....			.18	.15	
Jean Siret—Everbloomer; cream .....			.25	.20	
Laddie Boy—Medium blue, bi-color, velvety ..			.18	.15	.12
Lurida—Col. Candelot color .....			.18	.15	.12
May Night—Very dark blue-purple .....			.18	.15	.12
Marocain—S. violet; F. pansy violet .....			.18	.15	.12
Mozo—New red; dwarf .....		.50		.45	
Royal—S. rich blue; F. reddish purple .....			.18	.15	
Schneekuppe—White with cream .....			.18	.15	
Sound Money—Good clean yellow .....			.20	.18	
Tony—Red purple with orange beard .....			.18	.15	
The Bride—White; free flowering .....			.18	.15	
Yellow Frills—Yellow; ruffled .....			.20	.20	
Zua—White crinkled .....			.18	.15	.12
Zwanenberg—Cream with maroon .....			.18	.15	.12



## ORIENTAL POPPIES

We will ship them after August 1.

	Price of each in lots of	Retail Price	Wholesale Prices		
			1	5-10	25 or More
<b>Barr's White</b> —Purplish black spots .....		1.00	.75	.60	.50
<b>Beauty of Livermore</b> —Bright crim., very lrg..		.75	.50	.50	.45
<b>Bracteatum</b> —Fiery scarlet .....		.75	.50	.50	
<b>Cavalier</b> —Scarlet red. Crinkly flowers .....		.75	.50	.50	
<b>Cerise Beauty</b> —Large, Cerise pink .....		.75	.50	.50	
<b>Curtis Flame</b> —Ex. large flame-red blooms..		1.00	.65	.60	
<b>Curtis Flesh</b> —Pink-flesh-pink with lavender		1.00	.65	.60	
<b>Curtis Mulberry</b> —Large 8" mulberry flowers		1.00	.65	.60	
<b>Curtis Salmon Pink</b> —Salmon pink .....		1.00	.65	.60	
<b>Enchantress</b> —Soft lilac rose .....		1.00	.50	.50	
<b>Gold of Ophir</b> —Golden Orange, 26" .....		1.00	.50	.50	
<b>Helen Elizabeth</b> —Pink. No dark spots .....		1.00	.50	.50	
<b>Henri Cayeux</b> —Old rose, unusual color .....		1.00	.50	.50	.45
<b>Jeanne Mawson</b> —Geranium pk. Erect grower		.75	.50	.50	
<b>Joyce</b> —Cerise and old rose .....		.75	.50	.50	
<b>Mahoney</b> —Large dark red; scarce .....		.75	.60	.50	
<b>Mrs. Perry</b> —Salmon pink, free flowering .....		.75	.50	.50	.45
<b>Orange Perfection</b> —Strong grower with orange tinted flame red .....		.75	.50	.50	
<b>Orientale</b> —Crimson scarlet. Large black blot		.75	.50	.50	
<b>Perry's White</b> —Good size, blue black blot .....		1.00	.75	.60	.50
<b>Pink Radiance</b> —Radiant pink; 30" .....		.75	.50	.50	
<b>Prosperine</b> —Chinese red, immense flowers .....		.75	.50	.50	
<b>Purity</b> —Soft pink. No markings .....		1.00	.50	.50	
<b>Salmon Glow</b> —Double salmon orange. Erect		1.00	.60	.50	
<b>Watermelon</b> —Huge watermelon pink flowers		1.00	.65	.65	
<b>Wunderkind</b> —Finest cerise .....		1.00	.65	.60	
<b>Wurtembergia</b> —Very large, red, good .....		.75	.50	.50	.50



---

---

# PLANT A SHOW GARDEN

*for easy profits*

NO FLOWER WE KNOW  
WILL ATTRACT THE FLOWER LOVER  
AS DO PEONIES

We have hundreds who come every year from  
**100, 200 and 300 MILES**

## NO WORK

only some roadside space where you may plant

**75 to 250 Eye Catching Peonies**  
and you will have the visitors.

HAVE A LITTLE SHOW IN YOUR HOME, GARAGE,  
OR WHEREVER YOUR VISITORS CAN SEE AND  
EXAMINE THEM AT LEISURE, AND  
THEY WILL SOON SAY,

*"I would like some of that and the other,"*  
and you will have a fine sized order —

**Maybe \$5.00, maybe \$50.00, possibly over \$100.00**

MAKE IT A POINT TO COME TO OUR PLANTING  
DURING BLOOMING TIME

**EARLY JUNE IS BEST**

# PEONIES

5 at 10 rate

## All Three-Year Stock — 3-5 Eyes

	Price of each in lots of	Retail Price	Wholesale Prices		
			1	5-10	25 or More
A. B. Franklin (Fra) White opening blush..		2.50	1.50	1.25	
Addielanchea (Bra) Creamy white .....		1.00	.65	.40	
Adolphe Rousseau (Des) Deep garnet .....		1.50	.75	.75	
Aksarben (Rose) Brilliant dark crimson ...		1.00	.75	.60	
Albert Crousse (Cr) Salmon pink, late .....		1.00	.60	.50	
Alesia—Creamy white .....		5.00	2.50	2.50	
Alex D. Vories—Rose-red, very tall .....		1.50	1.00		
Alice Balfour (Kel) Delicate rose pink .....		1.00	.50	.40	
Alice Harding (Lem) Cream white, good .....		2.00	1.00	.85	
Alice Reed Bates—Very large, rose pink. M.		3.50	2.50		
Allure—White. Loosely built .....		2.50	1.50	1.25	
Alpheus Hyatt (Rich) Rose pink, late .....		1.00	.50	.45	
Alsace Lorraine (Lem) Creamy white, late ...		1.00	.50	.40	.35
A. P. Saunders (Thur) Flesh white, late .....		2.00	1.00	.75	
Anna Sass (Sass) Delicate lt. pink, tall. L.M.		1.50	.75		
Archie Brand (Bra) Shell pink .....		1.00	.50	.50	
Argentine (Lem) LM. Purest white, fragrant		2.00	1.00	.85	
Armance Dessert (Dor) Soft, silv. sal. pink...		1.25	.75	.50	
Asa Gray (Cr) Pale lilac dotted .....		1.00	.50	.50	
Auguste Dessert (Des) Crim., Silver edge ...		1.25	.65	.60	.55
Auguste Villaume (Cro) Rose, late .....		1.00	.50	.50	
Augustin D'Hour—Solferino red .....		1.00	.60	.50	
Avalanche (Cr) Cream white .....		1.00	.60	.55	
Ave Maria—Semi-double, very light pink ...	10.00	7.50			
Aviateur Lindbergh—Extra fine red .....		2.50	1.50		
Ball o' Cotton (Fra) Pure white .....		1.00	.60	.55	.50
Baroness Schroeder (Kel) Flesh white, good		1.00	.60	.55	.50
Bayadere (Lem) Cream white .....		1.00	.50	.40	
B. B. Wright (Wri) Beautiful pink .....		1.00	.60	.55	
Ben Franklin (Bra) Dark crimson, tall .....		1.25	.75	.75	
Benoit—Dark red, late .....		1.50	.75	.75	
Betty Blossom (Thur) Soft yellow effect .....		1.50	.75	.60	.55
Big Ben—Medium dark red bomb, early .....		7.50	6.00		
Bishop Burke (Vor) Crimson .....		1.50	.85	.75	
Blanche Elie—White Mons. Jules Elie .....		4.00	2.50		
Blanche King (Bra) Deep pink .....		3.00	2.00	2.00	
Blushing Beauty (Frank) Pale pink .....		1.50	.75	.60	.50
Candeur (Des) Silvery pink .....		1.00	.50	.40	
Cathie Ann (Auten) Deep rose-pink, 40" .....		7.50	5.00		
Charles McKellip (Bra) Rich, ruby-crimson		1.25	.75	.65	
Charlot (Dor) Silvery white, early .....		1.50	.75	.65	.50
Cherry Hill (Thur) Deep garnet, early, tall ...		1.25	.75	.75	
Chestine Gowdy (Fra) Shell pink .....		1.00	.50	.45	.40
Chief (Fra) Light pink, very large .....		3.00	2.00		
Claire Dubois (Cr) Satin pink, large, late ...		1.00	.50	.45	.40
Clara Anderson (And.-Hol) White gold stam.		1.00	.50	.45	
Col. Chas. A. Lindbergh (Kund) Early red....		1.25	.75	.75	
Coral Queen (H. Sass) Bluish-pink, late .....		2.00	1.50		
Cornelia Shaylor (Shay) Shell pink, late .....		1.00	.60	.45	.35
Coronation (Kel) Light pink, white center ...		1.00	.50	.45	.35
Couronne d'Or (Cal) Milk white, late .....		1.00	.50	.40	.35
C. W. Shock (Frank) Red, midseason .....		1.00	.75	.75	
Daniel Boone—Tall deep red, very stiff stems		1.50	1.00	1.00	
David (Kel) Coral pink .....		1.00	.50	.45	.40
David Harum (Bra) Bright red, good .....		1.50	.75	.75	
Denise (Lem) White flecked crimson .....		2.50	1.00	.85	
Denis Debatene (Dor) Salmon pink ... ..		1.50	.75	.65	
Desire (Bra) Delicate mauve .....		1.00	.50	.45	.40
Doris Shaylor (Shay) Fine pink .....		1.25	.65	.60	.50
Dorothy J. (Jones) Tall rich cream, silver, M	12.50	8.00	8.00		
Dr. J. H. Neeley, (G & R) Lg. tall white .....		3.00	2.00	2.00	

	Price of each in lots of	Retail Price	Wholesale Prices		
			1	5-10	25 or More
Duchesse de Nemours (Cal) White .....		1.00	.50	.45	.35
Du'uth (Frank) Pure white, late .....		2.00	1.00	.75	.60
E. C. Shaw (Thur) Clear Rose, frag., late .....		1.50	.75	.65	
Edith M. Snook (Snook) Flesh pink, late .....		6.00	3.50	3.00	
Edulis Superba (Lem) Dark pink .....		1.00	.50	.45	.40
Elisa (Des) Hydrangea pink .....		1.00	.60	.45	.40
Eliz. B. Browning (Bra) Pure white .....		1.50	.75	.75	
Ella Christiansen (Bra) Deep pink .....		3.00	2.00	1.75	
Elsa Sass (Sass) Full rose type white, tall, .....		3.50	2.50	2.50	
Estafette (Des) Crim., silvery margin, early .....		1.50	.75	.75	
Etta (Ter) Deep shell pink, very late .....		1.00	.50	.45	
Eugene Verdier (Cal) Pale Hydrangea pink..		1.00	.50	.45	.40
Eugenie Verdier (Cal) Hydrangea pink .....		1.00	.50	.45	.35
Evangeline (Lem) Compact pale pink, late..		1.00	.50	.40	.35
Evening Glow (Hol) Lilac, late, tall .....		1.50	.75		
Evening Star—White with red edgings .....		3.50	2.00	2.00	
Exquisite (Kel) Rosy pink, frag., tall .....		1.00	.50	.45	.35
Fairvette—White streaked red .....		1.00	.50	.50	
Fanny Crosby (Bra) Yellow .....		1.50	.75	.75	
Faustine (Lem) Pale pink .....		1.00	.50	.40	.35
Felix Crousse (Cr) Brilliant red .....		1.00	.50	.50	.50
Festiva Maxima (Miel) Large fine white ....		1.00	.50	.50	.50
Flamingo (And) Light pink, early .....		3.00	2.00		
Florence Macbeth (Sass) Large light pink ..		1.25	.60	.50	.40
Floweret of Eden (Neeley) Mauve pink .....		1.00	.50	.45	.35
Flower Girl (Aut) White tinted pink .....		5.00	3.50		
Fragrans—Very late rose .....		1.00	.50	.40	.35
Frances Shaylor (Shay) White and gold effect		1.00	.50	.45	
Frances Willard (Bra) Blush white .....		1.00	.60	.50	.40
Francois Rousseau (Des) Dark red, early ....		1.50	.75	.75	
Frankie Curtis (Vor) A white M. Jules Elie...		2.50	1.25	1.00	
Franklin's Pride (Frank) Pink, frag. ....		2.50	1.75	1.50	
Fulgida—Rose magenta .....		1.00	.50	.45	
Galathee (Lem) Flesh white .....		1.00	.50	.40	
Garden Princess (Nee) Iv. pink, very distinct		1.50	.75	.65	.55
Gene Str. Porter (Ros) White, bird nest form		1.00	.50	.40	.35
Germaine Bigot (Des) Pale lilac rose .....		1.00	.50	.40	.35
Gilbert Barthelot (Dor) Silvery pink .....		1.50	.60	.50	.40
Ginette (Des) Flesh pink, dwarf .....		1.00	.50	.50	
Gismonda (Cr) Flesh colored, late .....		1.00	.50	.45	.35
Gloriana (Neeley) Large, pink .....		1.50	.75	.60	
Glorious (New) Lt. pink shading to white ....		1.00	.50	.40	
Golden Dawn (Gumm) Yellow cushion .....		2.00	1.00	.75	
Good's Dream (G & W) White, midseason ...		3.50	1.75	1.50	
Gov. Fuller (Thur.) Fresh shell-pink, fragrant, late, .....		2.50	1.50		
Grace Batson (Sass) Deep pink bomb .....		2.00	1.00	1.00	
Grace Loomis (Saund) White, late, tall .....		2.00	1.00	1.00	
Grandiflora (Rich) Silvery pink .....		1.00	.60	.50	.50
Gretchen—Light pink .....		1.00	.50	.40	
Grover Cleveland (Ter) Dark crimson, good..		1.00	.65	.65	.60
H. A Hagen (Rich) Deep rose pink, late .....		1.00	.60	.50	
Hansina Brand (Bra) Pink, prize winner .....		3.50	2.50	2.00	
Hargrove Hudson—Soft, even light pink ...	10.00	6.00			
Hans Peter Sass (Sass) Blush wh., very good		3.00	2.00	1.75	
Harriet Farnsley (Bra) Dark crimson .....		1.00	.65	.65	
Harry L. Burden (Nee) Delicate pink, large		2.50	1.00	1.00	
Harry F. Little (Nich) Tinted wh., fra., lg.		3.50	2.50	2.00	
Hazel Kinney (Bra) Clear hyd., pk, rose type		1.00	.60	.45	.40
Helen Wolaver (Bra) Sea shell pink .....		1.00	.50	.40	.35
Henri Cori (Dor) Flesh pink .....		1.00	.50	.50	
Henry Avery (Bra) White with yellow collar		1.00	.60	.50	.40
Henry M. Vories—Late, flat, light pink .....		2.50	1.50		
Henry Webster (Frk) Large red, late .....		3.00	1.50	1.25	
Hermione (Sass) Light pink, tall, large, late		1.50	.75	.75	

	Retail Price	Wholesale Prices		
		1	5-10	25 or More
Hespanola (And) Shell pink .....	1.50	.75	.60	.50
H. F. Reddick (Bra) Bright dark crimson ....	1.00	.65	.60	
Hiawatha (Fra.) Very large dark red. L. 36" ..	3.00	2.00	2.00	
Ideal (Fran.) Very large, full rose type .....	3.00	2.00	1.50	
Ingenieur Doriat (Dor) Car. red, strong stems ..	2.50	1.00	1.00	
Inspecteur Lavergne (Dor) Fine new red ....	1.50	.75	.60	
Jacques Doriat .....	2.00	.85	.75	.60
James Boyd (Thur) Flesh changing white ....	1.00	.50	.40	.35
James Kelway (Kel) Rose white, early, frag. ....	1.25	.65	.50	
James R. Mann (Thur) Rosy pink .....	1.00	.60	.40	
James Pillow—Light pink, E. M. ....	7.50	4.00		
Jean Harlow (Wright) White .....	5.00	3.00	2.50	
Jeannot (Des) Flesh pink, extra fine, late ....	1.25	.60	.40	.35
Jean Cooperman—New midseason red .....	2.50	1.50		
Jenny Lind (Barr) Pink .....	1.00	.50	.40	.35
Jessie Shaylor (Thur) Deep cream .....	1.00	.60	.50	.40
John M. Good (G & W) White, rose type .....	1.25	.65	.50	.40
Jubilee (Pleas) Flesh white, fine, early .....	1.00	.60	.50	
Judge Berry (Bra) Delicate pink, early .....	1.00	.60	.55	.50
Judge Snook (G & R) Cream white, large.....	5.00	3.50	3.50	
Judy Becker (Sass) Brill. dk. red, large, tall ..	5.00	3.50		
June Brilliant (Aut) Brilliant red, late .....	3.00	2.00		
June Day (Fra) Light flesh edged lavender ....	1.50	1.00		
Kansas—Bright red. Early. New .....	10.00	7.50		
Karl Rosenfeld (Ros) Dark crimson, good ....	1.00	.60	.55	.50
Katherine Havemeyer (Thur) Flesh pink ....	1.00	.60	.50	.40
Kelway's Glorious (Kel) Creamy white, frag. ....	2.50	1.25	1.25	1.00
Kelway's Queen (Kel) True, pink, frag. ....	2.00	.75	.65	
Kundred's Jubilee (Kund) White .....	1.00	.50	.40	
Lady Alex. Duff (Kel) Pale pink, fine .....	1.00	.60	.50	
Lady Kate (Vories) Very late blooming pink ..	2.00	1.00	.85	
Lafayette (Dess.) Lovely salmon pink. Large ..	1.50	.75	.60	
La Fee (Lem) Rose pink, frag., early .....	1.50	.75	.75	
La France (Lem) Violet rose pink, late .....	1.25	.75	.65	
Lake 'o Silver (Fra) Light pink, silver tipped ..	1.50	.85		
La Lorraine (Lem) Cream white, late .....	2.00	1.00	.85	
La Perle (Cr) Soft pink, cup shaped .....	1.00	.50	.40	.35
La Rosiere (Cr) Cream white .....	1.00	.50	.40	
Last Rose (Sass) Deep pink, very late .....	1.50	.75	.60	
La Tulipe (Cal) Lilac white .....	1.00	.50	.40	.35
Laura Dessert (Des) Canary yellow .....	1.50	.85	.75	
Laura Kelsey—Light pink, large flowers ....	6.00	4.00		
Laura Vories (Vor) Flesh white, pk. center ..	3.00	2.00		
Le Cygne (Lem) Milk white, early, the finest ..	2.50	1.50	1.25	
Lillian Gumm (Gumm) shell pink .....	1.00	.60	.50	
Livingstone (Cr) Lilac rose .....	1.00	.50	.45	
Lois Gayle—Pink. New .....	6.00	5.00		
Longfellow (Bra) Cherry red, good, mid-seas. ..	1.50	.75	.75	.65
Lora Dexheimer (Bra) Crimson, rich quality ..	1.25	.75	.65	.60
Lorch (G & K) Cream white, extra fine .....	1.00	.50	.50	.45
Lord Kitchner (Ren) Very early, red .....	1.00	.65	.60	
Loren Franklin (Frank) Dark pink, late ....	2.00	1.50	1.50	
Lucky Strike (Wright) New double pink .....	1.50	.75	.65	
Louise Lossing—Immense white, very new ....	7.50	5.00		
Loveliness (Hol) Hydrangea pink .....	1.00	.60	.50	
Lucile Hartman (Frank) Light pink .....	2.50	1.50	1.50	
Lucy E. Hollis (Hol.) Pink .....	1.00	.50	.40	.35
Lucy Shaylor (Shay) Creamy yellow center ..	2.00	.75	.60	
Luetta Pfeiffer (Bra) Hydrangea pink, early ..	1.50	.75	.75	
Lulu Little—Light pink. L.M. Very good ....	4.00	3.00		
Luxor (Sass) White Mons. J. Elie .....	3.50	2.00	1.75	
L. W. Pollock—Very brilliant dk. pink. L.M. ..	10.00	6.50		
Mabel L. Franklin (Fra) Light pink .....	1.25	.75	.65	
Madelon (Des) Silvery pink, new .....	1.00	.50	.45	.35
Madonna (Nee) Cream white, loosely built....	2.00	1.50	1.25	
Magnificent (Bra) Dark red, tall, early .....	1.25	.75	.75	

	Price of each in lots of	Retail Price	Wholesale Prices		
			1	5-10	25 or More
Manitou (And) Blush, rose fragrance .....		1.50	.75	.75	
Marcheal Vaillant—Large red, huge, late ....		1.50	.85	.75	
Margaret Elliott Waggaman (Dor) Sal., tall..		1.50	.75	.60	
Margaret Vierheller (Wett) White .....		1.00	.50	.45	.40
Marguerite Gerard (Cr) Flesh pink .....		1.00	.50	.40	.35
Marie Crousse (Cr) Shell pink, fine .....		1.00	.50	.50	
Marie Jacquin (Vor) White water lily .....		1.00	.50	.50	
Martha Bulloch (Bra) Rose pink, large, late		1.50	.75	.65	.60
Marvel (Secor) Fine large pink .....		1.50	.75	.75	
Mary Auten (Aut) White with pink tints, L.		2.50	1.75		
Mary Brand (Bra) Deep red, silky .....		1.50	.75	.75	
Mary A. Livermore (Hol) Lilac pink .....		1.00	.50	.50	
Mary Wood. Shaylor (Shay) Clr. pink, dwarf		1.00	.60	.50	
Matchless Beauty (Nee) Cream white, good..		2.50	1.50	1.50	
Matilda Lewis (Saun) Red, fine .....		3.00	2.00	2.00	
Mattie Lafuze— White tinted pink. L.M. ....		12.00	8.50		
Mignon (Lem) Amber white, dwarf .....		1.00	.50	.40	
Mildred May—Immaculate white with golden stamens. Semi-double .....		6.00	4.50		
Milton Hill (Rich) Salmon pink, late .....		1.00	.50	.45	.40
Minerva (Sass) Blush pink, strong stems ....		1.50	.75	.75	
Minnie Shaylor (Shay) Semi-double; white....		2.00	1.00	.75	.65
Minuet (Fra.) Very large light pink, late ....		3.00	1.75	1.50	
Miriam (Chase) Rich pink .....		1.00	.60	.55	
Miss America—Blush white .....		10.00	7.50		
Miss Henninger (Terry) White .....		1.00	.50	.45	.40
Miss Minneapolis (Frank) Pale pink .....		2.00	1.00	.85	
Mlle. Jeanne Riviere (Rivi) Rose .....		1.50	.75	.75	
Mme. Calot (Miel) Flesh .....		1.00	.50	.45	.35
Mme. Claude Tain (Dor) Fine white .....		1.50	.75	.60	
Mme. de Treyeran (Des) Flesh white .....		1.00	.50	.40	
Mme. de Verneville (Cr) Blush white .....		1.00	.50	.50	.40
Mme. Ducel (Mech) Soft pink bomb .....		1.00	.50	.40	.35
Mme. Edouard Dorlat (Dor) White, fine .....		1.50	.75	.65	.50
Mme. Emile Dupraz (Rivi) Old Rose-pink, fragrant .....		1.00	.50	.45	.40
Mme. Emile Galle (Cr) Lilac white .....		1.00	.50	.50	.40
Mme. Emile Lemoine (Lem) Milk white .....		1.00	.50	.50	
Mme. Escary (Lem) Creamy white .....		2.50	1.00	.75	
Mme. Gaudichau (Mil) Dark crimson .....		1.50	.85	.75	
Mme. Geissler (Cr) Rose pink .....		1.50	.75	.65	
Mme. Jules Dessert (Des) Cream white .....		1.00	.65	.55	.50
Modele De Perfection (Cro) Old rose, late ..		1.00	.50	.50	.40
Modella (Bet) Light pink, med. tall .....		1.00	.50	.40	.35
Modeste Guerin (Gue) Rose pink, early .....		1.00	.50	.45	.40
Mons. Dupont (Cal) Milk white .....		1.00	.50	.45	.35
Mons. Jules Elie (Cr) Deep pink, very large...		1.00	.65	.60	.55
Mons. Martin Cahuzac (Des) Dark garnet .....		2.00	1.25	1.25	
Mont Blanc (Lem) Milk white .....		1.00	.50	.45	
Montrose (And) Large deep rose comb .....		1.50	.75	.60	
Mr. L. Van Leeuwen (Niew) Dark pink .....		2.00	1.25	1.25	1.10
Mrs. A. B. Franklin (Frank) Pure white ....		2.50	1.75	1.50	
Mrs. A. G. Ruggles (Bra) Light pink .....		1.00	.50	.40	
Mrs. A. M. Brand (Bra) Purest white .....		2.50	1.50	1.25	
Mrs. C. S. Minot (Min) Shell pink and white..		1.50	.75	.75	
Mrs. Deane Funk (Bra) Good pink .....		2.00	1.00	.75	
Mrs. Ed Harding (Shay) Pure white, early....		1.50	.60	.50	.40
Mrs. F. D. Roosevelt—Rose type; medium ....		4.00	2.50		
Mrs. Frank Beach—Fine large white .....		2.50	1.50	1.25	
Mrs. Geo. Bunyard (Kel) Lilac rose .....		1.50	1.00	.85	
Mrs. Geo. Rawson (S & A) Fine, lt. pink, late		1.50	.75	.60	
Mrs. H. F. Little—Bluish, large, late .....		5.00	3.50		
Mrs. John M. Good (G & W) White .....		1.50	.75	.50	.40
Mrs. John M. Kleitsch (Bra) Light violet rose		2.50	1.50	1.25	
Mrs. John M. Lewis (Lew) Rich med. red .....		2.00	.75	.75	

	Retail Price	Wholesale Prices		
		1	5-10	25 or More
Mrs. J. V. Edlund—Largest white, fra., tall	3.50	2.25	1.75	
Mrs. Liv. Ferrand (Nich.) True salmon-pink	10.00	7.50		
Mrs. M. P. Clough (Shay) Salmon and white	1.00	.50	.40	
Mrs. R. M. Bachellor (Vor) White	5.00	3.50	3.00	
Mrs. Romaine B. Ware (Bra) Lt. fl. pink, tall	1.50	.75	.65	
Mrs. W. A. Rafferty—Tall rose pink	2.00	1.25	1.00	
Mrs. Shaylor Force (Shay) White	1.00	.60	.55	
Mrs. Springer Brooks (Edl) Wh., midseason	5.00	3.00	2.50	
Mrs. Ward Welch—White	2.50	1.25	1.00	
Mrs. W. D. Bennett (Wett) Pink, late	1.50	.75	.75	
Myrtle Gentry (Bra) Blush white, late	2.00	1.00	.85	.65
Nancy Dolman (Vor) Pink, tall, large	1.50	.75	.60	.50
Nancy Nichols—White with a pink suffusion.				
New	6.00	4.00		
Nancy Nora—Grand light pink to blush. L.M.	10.00	7.50		
Nanette (Dor) Cream white	1.50	.75	.60	.50
Nell Shaylor (Shay) White and gold	1.50	.75	.65	
New Era (Franklin) Pure white Mons. Jules				
Elie	2.50	1.50	1.25	
Nick Shaylor (S & A) Solange color	3.50	2.00	1.75	
Nimbus (And) Tall, white, rose type	1.25	.75	.65	.60
Nina Secor (Sec) Pure white	1.00	.60	.50	
Ninom (Dor) Soft flesh	1.00	.50	.45	.40
Nobility (Van Leeu) Bright pink	1.50	.75	.65	.55
Nymphaea (Thur) Creamy white, yel. stamens	1.00	.65	.50	
Octavie Demay (Cal) Pink, fragrant	1.00	.50	.40	.35
Odile (Dor) Flesh pink, fine	2.00	1.00	.85	
Old Silver Tip (Bra) Deep rose red	1.00	.65	.65	
Onondaga (Little) New tall red	4.00	2.50	2.00	
Opal (Pleas) Opalescent tints	1.00	.50	.45	.40
Pallas (Ter) Semi-rose, early pink	1.00	.50	.40	.35
Paradise (Hol) Hydrangea pink	1.00	.50	.45	.40
Pasteur (Cr) Pink, nearly white	1.00	.50	.45	
Peachblow—Peach-pink, very early	5.00	3.00		
Perrette (Des) White, tinged flesh	1.00	.50	.40	
Peter Pan (Hol) Lilac rose	1.00	.50	.50	
Philippe Rivoire (Riv) Dark crimson, frag.	3.00	1.50	1.50	1.50
Phlomele (Cal) Pink and yellow	1.00	.60	.50	
Phoebe Cary (Bra) Lavender pink, late	1.00	.60	.50	.40
Phyllis Kelway (Kel) Bright pink, lrg., frag.	1.00	.50	.45	.40
Pierre Duchartre (Cr) Lilac pink	1.00	.60	.50	
Pink Opal—Light pink, late	1.50	.75	.65	.50
Pittl Sinn (Vorles) Pink, strong plant	1.00	.50	.50	
Pleiades	3.00	2.00	2.00	
Pomponette (Des) Pink and silver	1.00	.50	.50	
Prairie King—Brilliant, light crimson, shaded purple	1.50	.85		
Pres. Roosevelt (Warn.) Good medium red.				
Midseason	1.50	.75	.75	
Pres. F. D. Roosevelt—Large rose type; dark pink; tall	3.00	2.25		
Pres. Taft (Cal) Delicate pink	1.00	.60	.55	.50
Pres. Wilson (Thur) Rose pink, frag.	2.00	1.00	1.00	
Pride of Essex (Thur) Flesh pink	1.25	.75	.60	.40
Pride of Paulding (Neeley) Rich flesh pink	1.00	.50	.40	.35
Primevere (Lem) Sulphur yellow, lovely	1.50	.75	.75	
Prince of Darkness—Dp. red, early, fragrant	1.25	.65	.65	
Priscilla Alden (Rob) Warm white, early	1.50	.75	.60	.50
Prof. C. Potrat (Dor) Cherry pink, tall, late.	1.50	.75	.75	
Queen of Hamburg (Sass) Full, bright, gleaming pink	3.00	2.00	1.75	
Ralph (Pleas) Bright pink, very late	1.00	.50	.50	
Raoul Dessert (Des) Mauve, shaded pink	1.50	.75	.65	
Reine Hortense (Cal) Delicate pink, fine	1.00	.60	.55	.50
Reine Baronet (Mil) Tyrian pink	1.00	.50	.40	
Rev. H. N. Tragitt (Bra) White	3.00	2.00	1.75	

	Price of each in lots of	Retail Price	Wholesale Prices		
			1	5-10	25 or More
Richard Carvel (Bra) Brilliant crimson .....		1.50	.75	.75	
Rita (Des) Flesh salmon pink .....		1.00	.50	.50	
Rosa Bonheur (Des.) Soft flesh pink. Late ..		1.00	.60	.50	.40
Rosabel—Midseason. Large perfect flowers of rose-red .....		1.00	.75	.75	
Rose Shaylor (Shay) Flushed white, fine .....		1.50	.75	.60	.50
Rosette (Des) Silvery flesh .....		1.00	.60	.45	
Rosine (Lem) Late, pale lilac .....		1.50	.50	.45	.35
Ruth Brand (Bra) Lavender pink .....		1.00	.50	.50	
Samuel Hughes (Kel) Deep amaranth .....		1.00	.50	.50	
Sarah Bernhardt (Lem) Apple blossom pink..		1.00	.60	.55	.50
Sarah K. Thurlow (Thur) Large white, late..		1.25	.65	.55	.45
Shattuck—Very early red .....		2.00	1.50		
Shawnee Chief (Bigger) Dark brilliant red. New .....		2.50	1.75	1.50	
Shaylor's Dream (Shay) Flesh .....		1.00	.50	.50	
Silvia Saunders (Saunders) Bright clear pink, center filled with yellow stamens .....		2.50	1.50	1.50	1.25
Solange (Lem) Cream, coffee color, late .....		1.00	.60	.50	.35
Sops of Wine (Secor) Dark red .....		1.50	.75	.65	
Souv. de A. Millet (Mil) Amaranth red .....		1.50	.75	.65	.60
Souv. de Francois Ruitton—Pink .....		1.00	.50	.50	
Souv. de Gen Gallieni (Riv) Pink .....		1.00	.60	.50	
Souv. de Louis Bigot (Des) Bengal rose .....		1.25	.65	.60	.55
Stephanie (Ter) Delicate pink .....		1.00	.50	.50	
Supreme (Hol) Pink, late .....		1.00	.50	.40	
Suzette (Des) Bengal rose, good gard. effect		1.00	.50	.45	
Sylvia Louise (Saun) Tyrian purple .....		2.50	1.25	1.25	
Tanager (Sass) Red, midseason .....		1.50	.75	.75	
Tempest (Auten) Brilliant clear dark red. Color holds .....		2.50	2.00	2.00	
The Disc (Sass) Red, late .....		1.50	.75	.75	
Therese (Des) Soft pink, the best pink .....		2.00	1.00	.90	.80
Thos. C. Thurlow (Thur) Salmon flesh .....		1.50	.75	.75	
To Kalon—Pure white. M. Semi-dwarf .....		7.50	4.00		
Tourangelle (Des) Flesh pink .....		1.00	.60	.50	.40
Trail's End (Neely) Soft pink .....		2.50	1.00	.85	
Umbelletta Rosea (Des) Pink, early .....		1.00	.50	.40	
Vaughan Torrey—Similar to Solange; erect		2.50	1.25	1.00	
Venus (Kel) Delicate shell pink .....		1.00	.50	.45	
Victor's Crown (Nee) Pink, midseason .....		3.00	1.00	.75	
Victory—Deep ivory, deepening to pink in center. Tall .....		10.00	6.00		
Victory Chateau Thierry (Bra) Bright pink....		3.50	2.00	1.75	
Victoire de la Marne (Des) Amaranth .....		1.50	.75	.70	.65
Walter Faxon (Rich) Salmon rose .....		1.50	.75	.65	.60
Wiesbaden (G & K) Deep pink .....		1.00	.50	.50	
W. E. Blanchette (Bra.) Very large red .....		10.00	8.00		
W. F. Christman—Flesh white .....		1.00	.50	.45	.40
W. F. Turner (Shay) Dark crimson .....		1.50	1.00	.90	
Wilton Lockwood (Thur) Rose pink .....		1.50	.75	.60	.50
W. L. Gumm (Gumm) White, late .....		2.50	1.50	1.25	
Yukon (Aut) Large, flat white .....		3.00	2.00		
Zest (Hol) Pink .....		1.00	.50	.50	
Ziba—Light red. Scarce .....		15.00	10.00		

# JAPANESE PEONIES

	Price of each in lots of	Retail Price	Wholesale Prices		
			1	5-10	25 or More
Akashigata (Des) Rose .....		1.50	.75	.65	.50
Alma (Shay) Light pink .....		1.00	.50	.50	
Altar Candles (Pleas) Delicate pink .....		1.00	.60	.50	
Ama-No-Sode—Light rose pink .....		3.00	1.75	1.50	
Antwerpen—Carmine pink .....		2.50	1.25	1.00	
Apple Blossom—Flesh pink .....		1.50	.75	.75	
Attraction (Hol) Tyrian rose .....		1.00	.50	.45	.40
Aureolin (Shay) Pink guards, yel. cen.....		1.00	.60	.50	.40
Bowl o' Beauty—Fuchsia-rose and yellow ...		7.50	5.00		
Cascade—White, midseason .....		1.00	.50	.50	
Cathedral—Deep pink guards .....		1.50	.75	.65	
Charm (Frank) Dk red, tall, strong .....		3.00	1.75	1.75	
Constance (Bern) Pink, yellow center .....		2.00	1.00	.85	
Creve Coeur (Auten) Clear dark red, tall ...		1.50	.75		
Dawn (Cal) Pink .....		1.00	.60	.50	
Diadem (Fra) Dark red .....		2.50	1.50	1.50	
Dog Rose (Kel) Delicate pink .....		1.50	.75	.75	
Eva—Light lilac crimson .....		2.00	.75	.75	
Fairy—Light pink, fine .....		1.50	.75	.75	
Flashlight (Hol) Tyrian rose .....		1.00	.60	.50	
Fugi-No-Mine—Pure milk white .....		1.50	1.00	.85	
Fuyajo—Velvety mahogany .....		1.25	.75	.75	
Glory (Hol) Light tyrian rose .....		1.00	.50	.45	.40
Goddess (Kel) Rose pink self .....		3.00	1.50	1.50	
Golden Nugget (Pleas) Rosy lilac .....		1.00	.50	.50	
Gold Mine (Hol) Tyrian rose .....		1.00	.50	.50	.45
Gypsy (Hol) Wine red, med. ....		1.50	.75	.60	.50
Hakodate (Mil) Large pure white .....		5.00	2.50	2.50	
Hari-Ai-Nin (Bab) Maroon .....		2.00	1.25	1.00	
Hatsugi—Dark red .....		1.00	.50	.45	.40
Henri Potin (Dor) China pink .....		1.00	.50	.50	
Ho-Gioku—White .....		1.00	.50	.50	
Innocence (Hol) Lilac rose .....		1.00	.50	.50	.45
Isani-Gidui—Pure white, exquisite .....		3.50	2.00	1.75	
Instituteur Doriat (Doriat) A fine red, tipped white .....		1.50	1.00	.85	
Jan Van Leeuwen—Pure white guards. Late .....		3.50	2.50		
Joseph Plagne (Dor) Carmine red .....		1.50	.75	.65	.50
Kameno-Kerogama—Clear red .....		1.00	.65	.50	
King of England (Kel) Rich carmine .....		1.50	.75	.75	
Knight of the Thistle (Kel) Crimson .....		1.50	.75	.60	
Kukeni-Jishi (Des) Silvery pink .....		3.00	2.00	2.00	
Kumagoe—Crimson pink .....		1.00	.50	.45	
Lotus—Beautiful pale pink .....		1.50	.65	.60	
Lou Shenk (Ros) Attractive pink .....		1.00	.50	.50	
Margaret Atwood—White, extra fine .....		3.00	1.50	1.50	
Melody (Aut) Pink, yellow center .....		1.00	.50	.45	
Mikado—Dark crimson, extra fine .....		1.00	.60	.55	.55
Minamota—Purple red, fine .....		1.50	.75	.75	
Monterey (Aut) Salmon pink .....		2.00	1.00	1.00	
Moon-Yen-Claire (Pleas) Rose pink .....		1.00	.50	.50	
Mr. G. F. Hemerick—Fine rose pink .....		2.00	1.00	.75	.60
Mrs. Wilder Bancroft — Very brilliant red, early .....		3.00	2.00		
Mrs. Mac (Fra) Pink, flecked .....		1.50	.75	.75	
Nippon Beauty (Aut) Dark red, the best .....		2.00	1.00	.75	.60
Nippon Brilliant (Aut) Red, very attractive .....		3.00	2.25		
Noon Day—Rose, very attractive .....		2.00	1.00	1.00	
O'Fugi—Flesh guard petals .....		1.00	.50	.50	



	Price of each in lots of	Retail Price	Wholesale Prices		
			1	5-10	25 or More
Oki No-Nami—Hydrangea pink .....		1.00	.50	.45	.40
Ohanagassa—Red tinted rose .....		1.50	.75	.75	
Ohirama—Carmine tinged purple .....		1.00	.75	.65	
Onahama (Gumm) Dark rich red .....		1.50	.85	.75	
Oriental Pearl (Wri) Light rose pink .....		2.00	.85	.75	.60
Ostrich Plume (Pleas) White guards .....		1.00	.50	.40	.35
Petite Renée (Des) Carmine pink .....		1.00	.50	.50	
Ping Wing—Pink, medium height .....		1.00	.50	.45	.40
Polar Star—White and yellow. Very large ..		3.00	2.00		
Prairie Afire (Brand) Pink .....		2.50	1.50	1.50	
Princess Duleep Singh (Kel) Rose pink .....		3.00	1.50	1.50	
Rabelais (Des) Pink .....		1.50	.75	.60	.50
Rashooman—Crimson guards, good .....		1.25	.75	.75	.65
Rigolette (Dor) Broad pur. crim. petals .....		2.50	1.00	1.00	
Rose Valley (Scott) Pink, hon. men .....		3.00	2.00	1.50	
Ruigegno—Rich dark maroon .....		1.50	.75	.65	.50
Seiriu Somae—White and sulphur .....		1.00	.50	.45	.40
Shawano (And) clear rose pink .....		3.00	1.50	1.50	
Shiro-Sangai—White guards, lovely .....		1.50	.50	.45	.40
Shy Maid (Aut) Lavender pink .....		1.00	.50	.45	.40
Silver Plume (And) Silvery pink .....		1.50	.75	.75	
Snow Wheel—White, very popular .....		1.50	1.00		
Sochl (Mil) Deep rose .....		2.00	1.00	1.00	
Soma Ganoka—Dark red guards, good .....		1.25	.75	.65	.55
Sunburst (Shay) Wh., beautiful, frag. ....		3.00	2.00	1.50	
Sunrise (Fra) Pink, yellow center .....		1.50	.75	.75	
Surugu (Mil) Pure red, new .....		1.50	.75		
Taiho—Pink .....		1.00	.50	.50	
Tamate Boku—Old rose pink with yellow ....		6.00	4.50		
Tokio—Clear pink, one of the best .....		1.50	.75	.75	
Toro-No-Maki—White, very good .....		3.00	1.50	1.25	
Torpilleur (Des) Carmine purple .....		1.50	.75	.75	
Welgetsuka—Large pink .....		1.50	.75	.75	
Westerner—Rose-pink, largest size .....		7.50	6.00	5.00	
White Japan—White .....		1.00	.50	.50	
Yamato Tsukasa—Bright rose .....		1.00	.50	.50	
Yellow King—Center is yellow; petals soft pink; best yellow .....		3.50	2.00	1.75	
Yeso—White tinted yellow .....		1.00	.50	.50	

## SINGLE PEONIES

	Price of each in lots of	Retail Price	Wholesale Prices		
			1	5-10	25 or More
Albiflora—White guards .....		1.00	.60	.55	.50
Black Prince (Thur) Dark garnet .....		1.50	1.00	.75	
Charlotte Core (Dor) Large pure white .....		2.50	1.00	1.00	
Edith West (Bra) White .....		1.50	.75	.60	
Eglantine (Des) Pink fancy white .....		1.00	.50	.50	
Flanders Field (Bra) Red, brilliant color ....		3.00	1.50	1.50	
Harriet Olney (Bra) Soft rose color .....		1.00	.50	.50	
Helen (Thur) Shell pink, tall & erect .....		2.50	1.50	1.25	
Imperial Red (Sass) Pink, erect grower .....		2.00	1.25	1.00	
Jeanne Ernould (Dor) Tall pink .....		1.50	.75	.60	.50
Kankakee (Aut) Fine red, very new .....		3.00	2.00		
Kelway's Wild Rose (Kel) Speck. pink .....		1.50	.75	.65	
Kewanee (Aut) Rich early dark red .....		1.50	.85		
Kickapoo (Aut) Late dark red, fine .....		2.00	1.25		
King Albert (Kel) Rosy violet .....		1.50	.75	.65	
Krinkled White (Bra) White, crinkled edges ..		3.00	2.25	2.00	
La Fiancee—White, good .....		1.00	.60	.55	.50
Le Jour (Shay) White, extra fine .....		1.50	.75	.65	.60
L'Etincelante (Des) Carmine shaded .....		1.25	.75	.65	.60

	Price of each in lots of	Retail Price	Wholesale Prices		
			1	5-10	25 or More
Letitia (Kel) Clear pink .....		1.00	.50	.40	
Louise Delettre (Dor) Light pink .....		1.00	.50	.40	.35
Madeleine Gauthier (Des) Shell pink .....		1.50	.75	.65	
Mafeking (Kel) Dark rose pink .....		1.00	.50	.50	
Margaret Dessert (Des) White, splashed .....		1.00	.50	.50	
Maurice Maeterlinck (Kel) Pink-crim. ....		1.00	.50	.45	.40
May Oleson (Ole) Pink apple blossom .....		1.00	.65	.50	
Minnehaha (Pleas) Cherry red, early .....		1.00	.65	.65	
Mischief (Aut) Good, soft pink .....		1.50	.75	.60	.50
Moonbeam—Opal tints, unusual .....		1.50	.75	.75	
Nellie (Kel) Pink blush, very fine .....		1.00	.50	.45	.40
Owatonna (Brand) Early pink .....		2.50	1.50		
Perle Blanche (Des) Pure white .....		1.25	.75	.60	.55
Pocohontas (Pleas) Rosy red, late, tall .....		1.00	.50	.45	.40
Pres. Lincoln (Brand) Red, midseason .....		5.00	2.50	2.50	
Pride of Langport (Kel) Peach pink .....		1.50	.75	.75	.60
Princess Matilda (Des) China pink .....		1.00	.50	.45	.40
Pure Love (Kel) Shell pink .....		1.00	.50	.45	.40
Queen (Pleas) White .....		1.00	.50	.45	.40
Rebecca Wright (Wri) Large fine white .....		2.00	1.00	.75	
Sea Shell—Light pink, distinct .....		3.00	2.00	1.75	
Silvia Saunders—Semi-double; shell pink .....		2.50	1.50	1.50	1.25
Veloutine (Des) Tyrian purple .....		1.00	.50	.45	.40
Venise (Des) Brilliant pink .....		1.00	.50	.50	
Vera (Gumm) Dark red, popular .....		2.00	1.00	1.00	
Verdun (Dor) Red, rich quality .....		2.00	1.00	1.00	
Vesuve (Des) Dark red, dwarf .....		1.00	.50	.50	
Whitleyi Major—White .....		1.00	.50	.50	
Wilbur Wright (Kel) Rich maroon .....		1.00	.60	.50	.50

### PEONY SPECIES

Anomala—Cut leaves, rose lilac .....	1.50	.75	.75	
Idgualata Rosea—Soft pink .....	1.50	.85	.75	
Lobata—Brilliant cerise, unusual .....	10.00	6.50		
Officinalis Alba Plena—Early white double ..	2.00	1.00	1.00	
Officinalis Rosea Plena—Bright pink double ..	1.50	1.00	1.00	
Officinalis Rubra Plena—Rich red .....	1.50	.75	.75	
Tenufolia Flora Plena—red double .....	2.50	1.50	1.50	
Tenufolia Latifolia—Crimson, single .....	1.50	.75	.75	

## HEMEROCALLIS

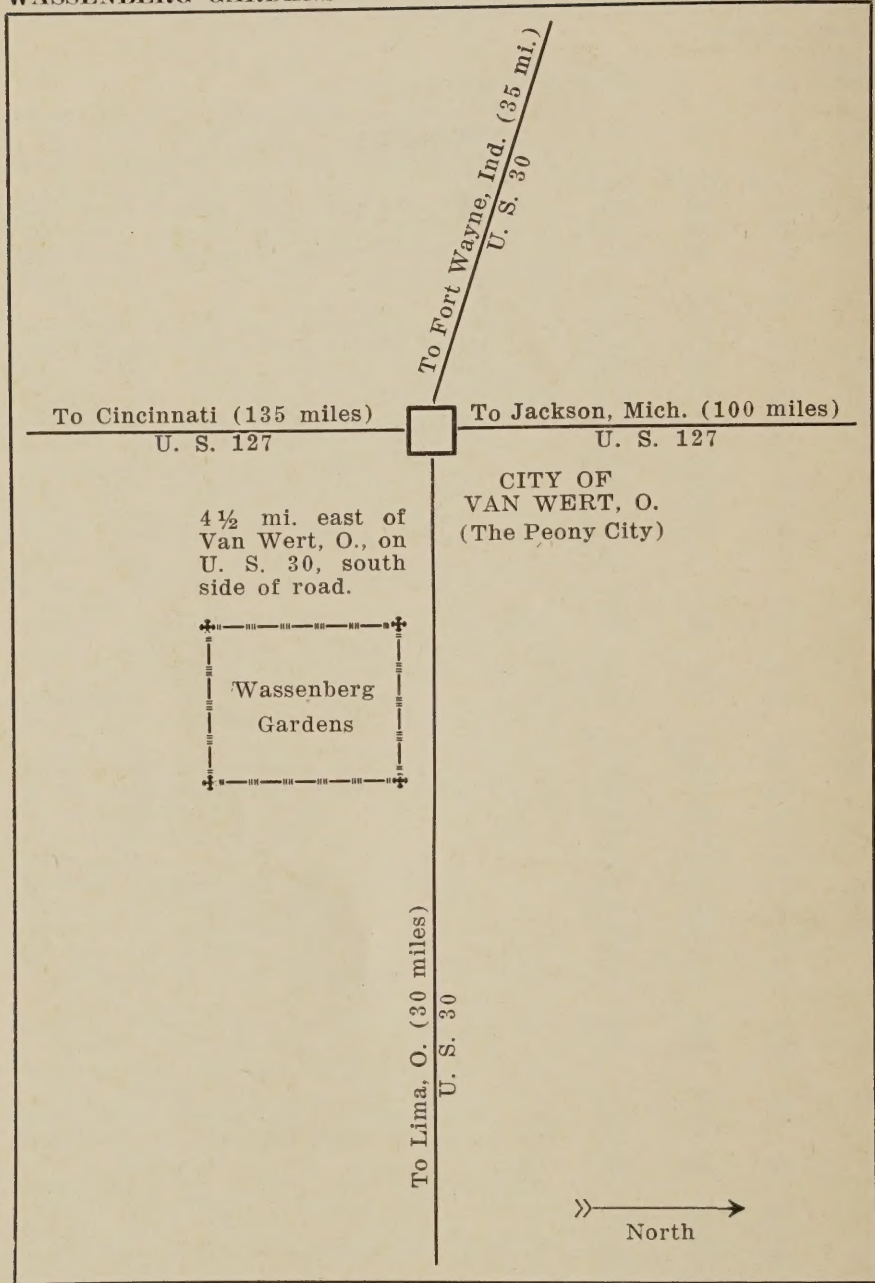
They are perfectly hardy. Will thrive in sun or partial shade. Beautiful for mass color effect in the garden or as a cut flower. Bloom from May to August. No modern garden should be without a collection.

	Price of each in lots of	Retail Price	Wholesale Prices		
			1	5-10	25 or More
Afterglow (Stout) Pale buff, 40" .....		2.00	1.25		
Amaryllis (Bet) 36". Golden orange, July....		.50	.35	.30	
Anna Betscher (Bet) 36". Deep orange .....		.50	.35	.30	
Apricot (Yeld) 2½ ft., light orange, early ...		.50	.25	.20	.15
August Orange (Stout) Rich orange. August ..		2.00	1.25		
Aureole—3 ft.; orange yellow .....		.50	.25	.20	.15
August Pioneer (Sto) 34" Chrome yellow ....		.75	.40	.35	.30
Autumn Prince—Clear light yellow .....		2.00	1.25		
Baby Tears—Rosy red ruffled petals .....		1.00	.65	.50	
Bagdad (Stout) Combination of color. 42" June-July .....		.50	.30	.25	
Bay State (Bet) Large yellow, 46" .....		.50	.30	.25	
Bijou (Stout) Orange, 24", June-July .....		.50	.30	.25	
Boutonniere (Sto) Light peach, 36", Jul-Aug.		.75	.35	.30	.25
Buckeye—Full, clear orange with large ma- hogany red eye. 3 ft. June .....		1.00	.65	.50	.40

	Price of each in lots of	Retail Price	Wholesale Prices		
			1	5-10	25 or More
<b>Caballero—Bicolor; yellow sepals</b> .....		1.00	.50	.40	.35
<b>Calypso (Bur) 3 1/2 ft., Canary yellow</b> .....		.50	.25	.20	.15
<b>Campus Queen (Russell) New yellow</b> .....		1.00	.50	.35	
<b>Chengtang—3 ft., July-Aug., recurved petals</b> ....		.75	.40	.35	
<b>Cinnabar (Sto) Brownish red; Jul-Aug., 30'</b>		.50	.35	.25	.20
<b>Circe (Stout) Clear yellow, 48", July</b> .....		.75	.35	.30	.25
<b>Cissy Giuseppe (Perry) Deep rosy bronze, July, 36"</b> .....		.50	.25	.20	.15
<b>Citrina—Sulphur yellow, June-July, 36"</b> .....		.50	.25	.20	.15
<b>Craemore Henna—Brilliant henna</b> .....		1.50	.85		
<b>Cressida (Bet) Bright orange, 36", June-Aug.</b>		.50	.30	.25	.15
<b>Crown of Gold (Nes) Deep or., June-July, 3'</b>		1.00	.50	.35	
<b>D. D. Wyman (Bet) Golden yel., July-Aug, 3'</b>		.50	.25	.20	
<b>Dominion—Reddish brown; medium</b> .....		1.50	.85	.75	
<b>Doris Dae (McDade)</b> .....		.50	.30	.25	
<b>Dr. Regel—Orange-yel., May-June; 30", frag.</b>		.50	.25	.20	.15
<b>Dumortieri—Cadmium yellow, May-June, 24"</b>		.50	.25	.20	.15
<b>Earliana (Bet) Very early</b> .....		1.00	.60	.50	
<b>Elaine Russell—True shell salmon, July</b>		2.00	1.25		
<b>Emily Hume—Deep yellow, twisted and fluted. 42", July-August</b> .....		1.00	.65	.55	
<b>Evangeline—Beautiful and unusual</b> .....		1.00	.65	.55	
<b>Fairy Queen</b> .....		1.00	.65	.50	
<b>Festival—Orange with reddish brown lines</b> ..		1.00	.65	.55	.50
<b>Fulva—The old roadside lily; July, 40"</b> .....		.50	.25	.20	.10
<b>Fulva Rosea—The pink hemerocallis</b> .....		2.00	1.00	.85	
<b>Fulvolo (Bet.) Dark fulvous. Very late. 30"</b>		1.00	.50	.40	
<b>Gaiety (Bet.) June-July. 52". Pale yellow</b> ....		1.50	.75		
<b>George Yeld (Perry) Gold. yel., Jul-Aug., 36"</b>		.50	.35	.25	.20
<b>Georgia—Buff and pink</b> .....		2.50	1.50		
<b>Gladness</b> .....		1.00	.50	.40	
<b>Gloriana (Bet) Golden yellow, June-July</b> ....		.75	.35	.30	.25
<b>Gold Dust—Empire yel., dwarf, 24", May-Jun.</b>		.50	.25	.20	
<b>Golden (Bet) Deep orange; June-July, 3 ft.</b>		.50	.25	.20	.15
<b>Golden Queen—Yellowish orange</b> .....		1.00	.50	.35	
<b>Gold Standard—Rich can. yel., Jul-Aug., 36"</b>		.50	.25	.20	.15
<b>Gypsy (Bet) Deep orange, June-July, 36"</b> ....		.50	.25	.20	.15
<b>Hankow (Sto) Yellow-Orange, July-Aug.</b> .....		1.00	.65	.50	
<b>Harvest Moon (Bet) Or. sherb., Jul-Aug., 36"</b>		.50	.35	.25	.20
<b>High Boy (Gray) Pale yel., 5 ft., Jul-Aug.</b> ....		.50	.35	.30	.25
<b>Hyperion (Mead) The best, waxy yellow, July and August, 48"</b> .....		.75	.35	.30	.30
<b>Imperator (Perry) Star shaped</b> .....		.50	.25	.20	.15
<b>Iris Perry—Orange bronze</b> .....		.75	.35	.30	
<b>J. A. Crawford (Bet) Apr. yel., Jul-Aug. 4ft.</b>		.50	.25	.20	.15
<b>J. R. Mann (Bet) Buff yel., June-Aug., 42"</b> ....		.50	.25	.20	.15
<b>Keepsake—Golden yellow</b> .....		1.00	.50	.40	
<b>Kwanso Flora Plena—Orange; double flowers, 42", July and August flowering</b> .....		.50	.25	.20	
<b>Lemona (Bet) Lemon-yellow, July-Aug., 42"</b>		.50	.25	.20	.15
<b>Linda (Stout) Golden yel., June-July, 30"</b> ....		.75	.35	.30	
<b>Lucky Star (Way.) 39" Brilliant lemon chrome. June-July.</b> .....		1.00	.50	.40	
<b>Luteola Major—Orange yellow, Aug., 36"</b> ....		.50	.25	.20	.15
<b>Majestic—Orange; large</b> .....		2.00	1.25	1.10	
<b>Marvel</b> .....		1.00	.50	.35	.30
<b>Mary Alice Fuller—Soft canary yellow</b> .....		.75	.40	.30	.25
<b>Mary Florence (Betsch) Waxy-apricot buff, June-July, 3 ft.</b> .....		.50	.35	.30	.25
<b>Margaret Perry (Per) Brilliant or., Jul-Aug.</b>		.50	.25	.20	.15
<b>Mandarin (Farr) Lemon yellow, Aug., 48"</b> ....		.50	.35	.30	
<b>Midas (Stout) Golden orange, June-July, 42"</b>		.50	.30	.25	
<b>Middendorfil—Rich or. yel., May-June, 18"</b> ..		.50	.25	.20	
<b>Mikado (Stout) Or., very good, Jun-Jul., 36"</b>		.50	.25	.20	.15
<b>Modesty (Bet) Pale yellow, 36", July</b> .....		.50	.35	.30	.25

	Price of each in lots of	Retail Price	Wholesale Prices		
			1	5-10	25 or More
<b>Monarch</b> —3 ft. July. Light cadmium yellow with delicate halo of fouvous orange .....		.50	.35	.30	.25
<b>Monte (Russ)</b> Every other petal lemon, others rosy brown .....		2.50	1.75	1.50	
<b>Mrs. A. H. Austin (Bct)</b> Deep yel., July 38" ..		.50	.35	.25	.20
<b>Mrs. B. F. Bonner</b> —Pure pale yellow, July .....		1.00	.60	.50	
<b>Mrs. Chas. Urshul</b> —Primrose yellow; 38" ....		.75	.50	.35	
<b>Mrs. W. H. Wyman (Bet)</b> Lemon-yel., July-Aug., 4 ft. ....		.50	.25	.20	
<b>No Siesta</b> —Early, good orange .....		1.00	.50		
<b>Old Vintage</b> —Wine with yellow throat .....		1.00	.75	.60	
<b>Ophir (Farr)</b> Dark golden yel., Jul-Aug., 48" ..		.50	.35	.25	.20
<b>Orange Man</b> —Medium yel., dwarf, May-June ..		.35	.25	.20	.15
<b>Pale Moon (Cleve)</b> Pale yel., June-July 30" ..		.75	.40	.35	.30
<b>Patricia (Stout)</b> Pale yellow, July, 36" .....		.75	.50	.40	
<b>Persian Princess</b> —Red with purple .....		2.00	.85	.75	
<b>Port</b> —Fine wine flowers .....		1.50	.75	.65	
<b>Purple Sage</b> —Darkest of red purples .....		1.50	1.00	.85	
<b>Purple Waters</b> —Wine purple .....		1.25	.75	.65	
<b>Queen Bess</b> .....		1.00	.50	.35	
<b>Queen of May</b> —2½ ft. June. Pale apricot-orange ..		.50	.35	.30	
<b>Radiant (Yeld)</b> Clear orange, Jul-Aug., 36" ..		.50	.25	.20	.15
<b>Rajah (Stout)</b> Open, scarlet orange with burning red stripe on petals. July, 36" ....		1.00	.50	.40	
<b>Rembrandt</b> .....		1.50	.65	.50	
<b>Rosalind (Fulva-Rosea)</b> The pink Hemerocallis .....		2.00	1.00	.85	
<b>Royal</b> —Primrose yellow, July, 36" .....		.50	.35	.30	.20
<b>Russell Minuet</b> —Dwarf, rose with yel. stripe ..		1.50	.75	.65	
<b>Sachem</b> —Reddish brown .....		1.00	.85	.75	
<b>Saffron</b> —Saffron yellow .....		.75	.50	.40	
<b>Semeramis</b> .....		.50	.35	.25	
<b>Serenade (Stout)</b> Pinkish red, 36" .....		.75	.40	.30	.25
<b>Shirley</b> —Pale apricot yellow .....		1.00	.50	.35	
<b>Sirius (Yeld)</b> Crinkled petals, 30" .....		.50	.30	.25	.20
<b>Sir. Michael Foster</b> —Apricot July-Aug., 48" ..		.50	.30	.25	
<b>Sir William (Perry)</b> Orange-red. 36", July-August ..		.50	.35	.25	
<b>Soudan (Stout)</b> Pure yellow, June-July, 54" ..		1.00	.50	.45	
<b>Sovereign (Yeld)</b> Orange yel., June, 30" .....		.50	.25	.20	.15
<b>Summer Mut. Hybrids</b> —2½ ft. June-Aug. Clear orange .....		.50	.30	.25	.20
<b>Sunny West (Sass)</b> Canary yellow, 48" .....		.50	.30	.25	
<b>Symphony</b> —3½ ft. June-July. Delicate pastel toned blend .....		1.00	.65	.50	
<b>Tangerine (Yeld)</b> Dark burnt orange. Semi-dwarf. 20", May and June .....		.75	.35	.25	
<b>Theron</b> —Wine red .....		.75	.50	.40	
<b>Thunbergii</b> —Pale yel. evening. bl., Jul-Aug. ..		.50	.25	.20	.15
<b>Tuscany Gold</b> —Old gold .....		.75	.40	.35	
<b>Vesta (Stout)</b> Golden orange, June-July, 30" ..		1.00	.50	.40	
<b>Vulcan (Ctout)</b> Ruffled deep maroon, 30" ....		1.00	.60	.50	
<b>War Path</b> —Dark mahogany red .....		1.50	1.00	.85	
<b>Wau-Bun (Sto)</b> Soft cadmium yel., Jul., 30" ..		.75	.40	.30	
<b>Western Star (Russ)</b> Nice shade of red .....		2.00	1.25	1.00	
<b>Winsome (Yeld)</b> Yel., very fine, Jun-Jul., 36" ..		.50	.35	.30	.25
<b>Woodlot Gold</b> —36". July-Aug. Soft gold .....		.50	.35	.30	.25

MEMORANDA



VISIT US DURING BLOOMING TIME

Familiarize Yourself with the Most  
Popular Varieties